

INDEX TO SHEETS

SHEET No.	DESCRIPTION
1	TITLE PAGE & LAYOUT MAP
2-3	TYPICAL SECTIONS & DETAILS
3-3a	SUMMARY SHEETS
4-6	PLAN & PROFILE SHEETS
7	SUMMARY OF DRAINAGE STRUCTURES SHEET
8	DETAILS OF TURNOUTS & CONNECTIONS
9	SUBGRADE SOIL SURVEY

PLAN CHANGE

SHEET No.	DESCRIPTION
1a	TITLE PAGE & LAYOUT MAP
5a	PLAN & PROFILE SHEET
8a	DETAILS OF TURNOUTS & CONNECTIONS

STATE OF LOUISIANA
DEPARTMENT OF HIGHWAYS

PLANS OF PROPOSED
STATE HIGHWAY

STATE PROJECT NO. 713-21-17
WEST FORK CALCASIEU RIVER BRIDGE AND APPROACHES
(INDIAN BAYOU)
CALCASIEU PARISH
La 378

STATE PROJECT	PARISH
713-21-17	CALCASIEU



VICINITY MAP

BRIDGE PLANS

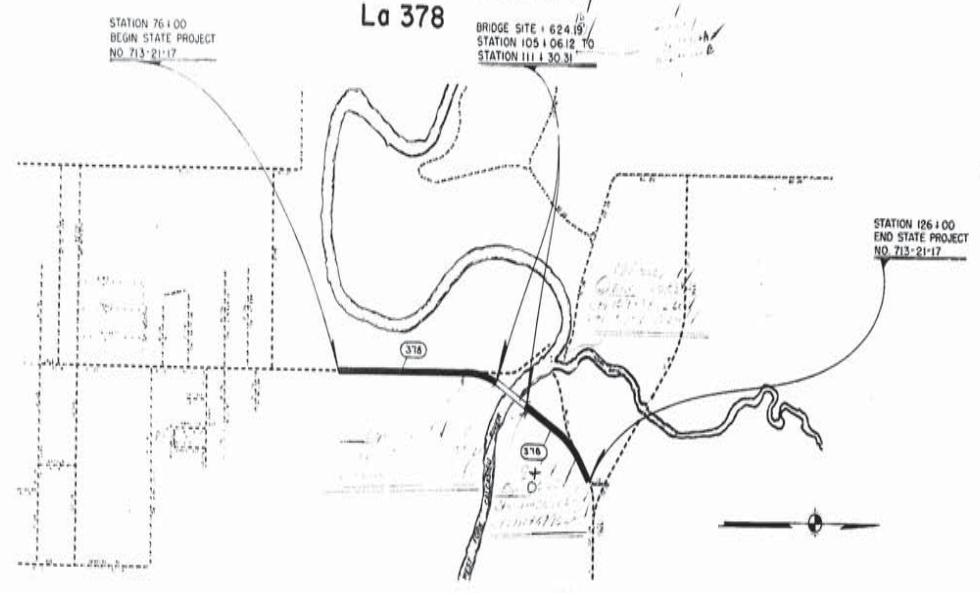
SHEET No.	DESCRIPTION	REV. DATE
101-173	R-F-14	2-2-56
201	R-F-16 REV.	8-21-64
204-203	R-S-24 REV.	12-65
208	R-M-14	4-9-63
209	C-M-95	3-11-59
210	C-M-97	2-25-55
211	R-S-21	12-29-61

CROSS SECTION SHEETS

SHEET No.	DESCRIPTION
401-413	CROSS SECTION SHEETS

TOTAL SHEETS WITHOUT CROSS SECTION SHEETS 95
TOTAL SHEETS WITH CROSS SECTION SHEETS 108

LAYOUT MAP ONLY
DESIGNED BY: [Signature]
CHECKED BY: [Signature]



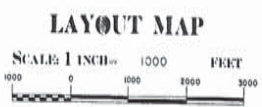
SCHEDULE OF REVISIONS

DATE	REVISION	DATE	RECOMMENDED	DATE	APPROVED

TYPE OF CONSTRUCTION:
ASPHALTIC CONCRETE PAVEMENT

TRAFFIC DATA:
1965 ADT = 400

DATUM USED: M.S.L.
MAG. VAR.: 7°-15'E
BEARINGS ARE TRUE
TRANSIT BOOKS: 68-797 67-556
LEVEL BOOKS: 68-931 68-816
PLAN: 1"=100'
SCALES: PROFILE: HOR. 1"=100'
VERT. 1"=10'



LENGTH OF PROJECT

DESCRIPTION	ALGEBRAIC SUM OF ALL EQUATIONS	GROSS LENGTH	EXCEPTION	BRIDGE LENGTH	ROADWAY LENGTH
STA. TO STA.	FEET	FEET	FEET	FEET	FEET
76+00 to 126+00	50000.0	50000.0		624.8	4375.81
TOTAL LENGTH OF BRIDGES				624.8	0.118
TOTAL LENGTH OF ROADWAY					4375.81
TOTAL MILES					0.945

RECOMMENDED FOR APPROVAL
[Signature]
5-3-66

RECOMMENDED FOR APPROVAL
[Signature]
5-3-66

RECOMMENDED FOR APPROVAL
[Signature]
5-3-66

RECOMMENDED FOR APPROVAL
[Signature]
5-3-66

APPROVED
[Signature]
5-3-66

RECOMMENDED FOR APPROVAL
DATE _____
DISTRICT ENGINEER
DEPARTMENT OF COMMERCE
BUREAU OF PUBLIC ROADS

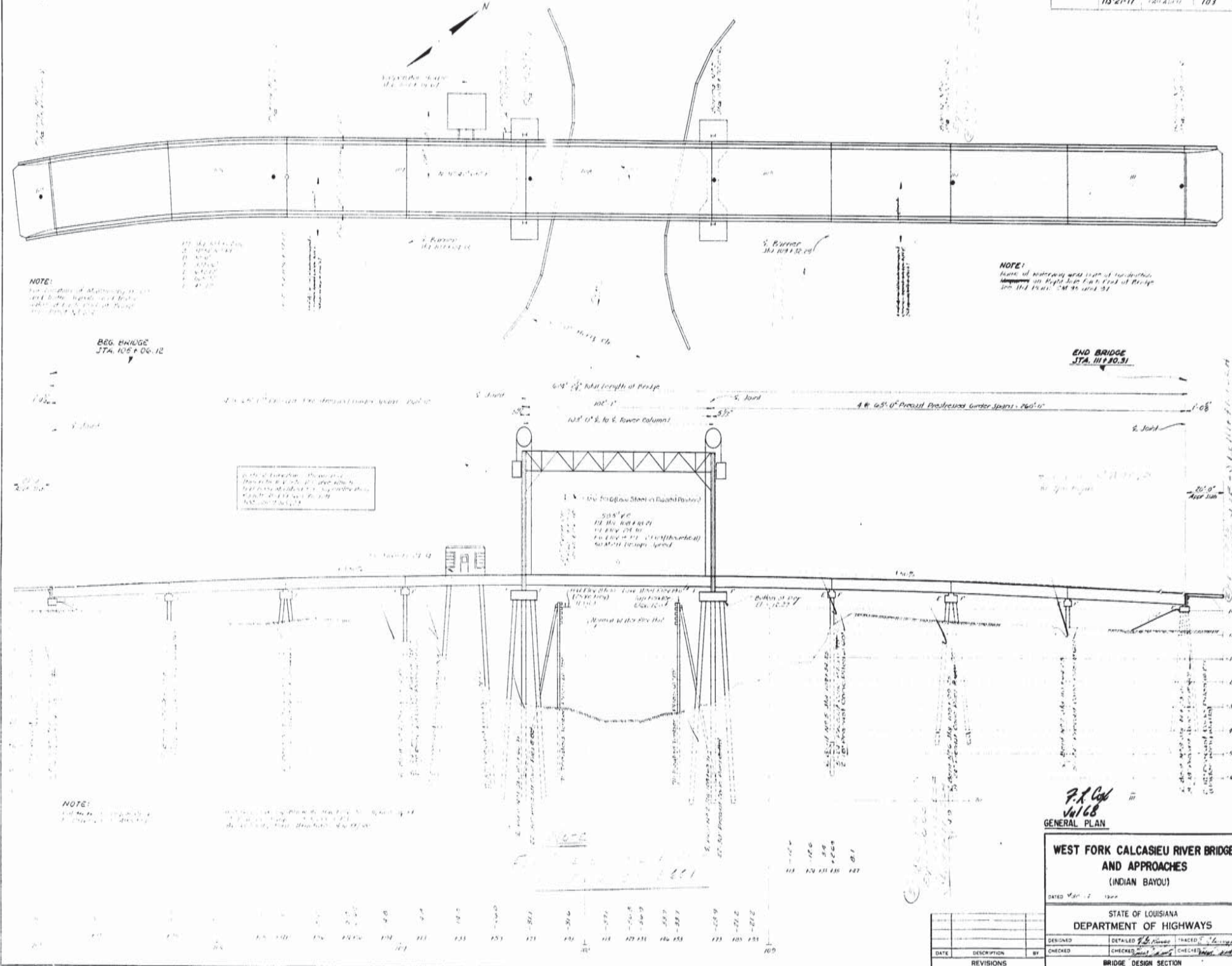
APPROVED
DATE _____
DIVISION ENGINEER
DEPARTMENT OF COMMERCE
BUREAU OF PUBLIC ROADS



AS BUILT PLANS

57

STATE PROJECT	REVISION	SHEET NO.
718-2-17	103	103



NOTE:

NOTE:

NOTE:

P.A. Coy
Jul 68
GENERAL PLAN

WEST FORK CALCASIEU RIVER BRIDGE AND APPROACHES (INDIAN BAYOU)

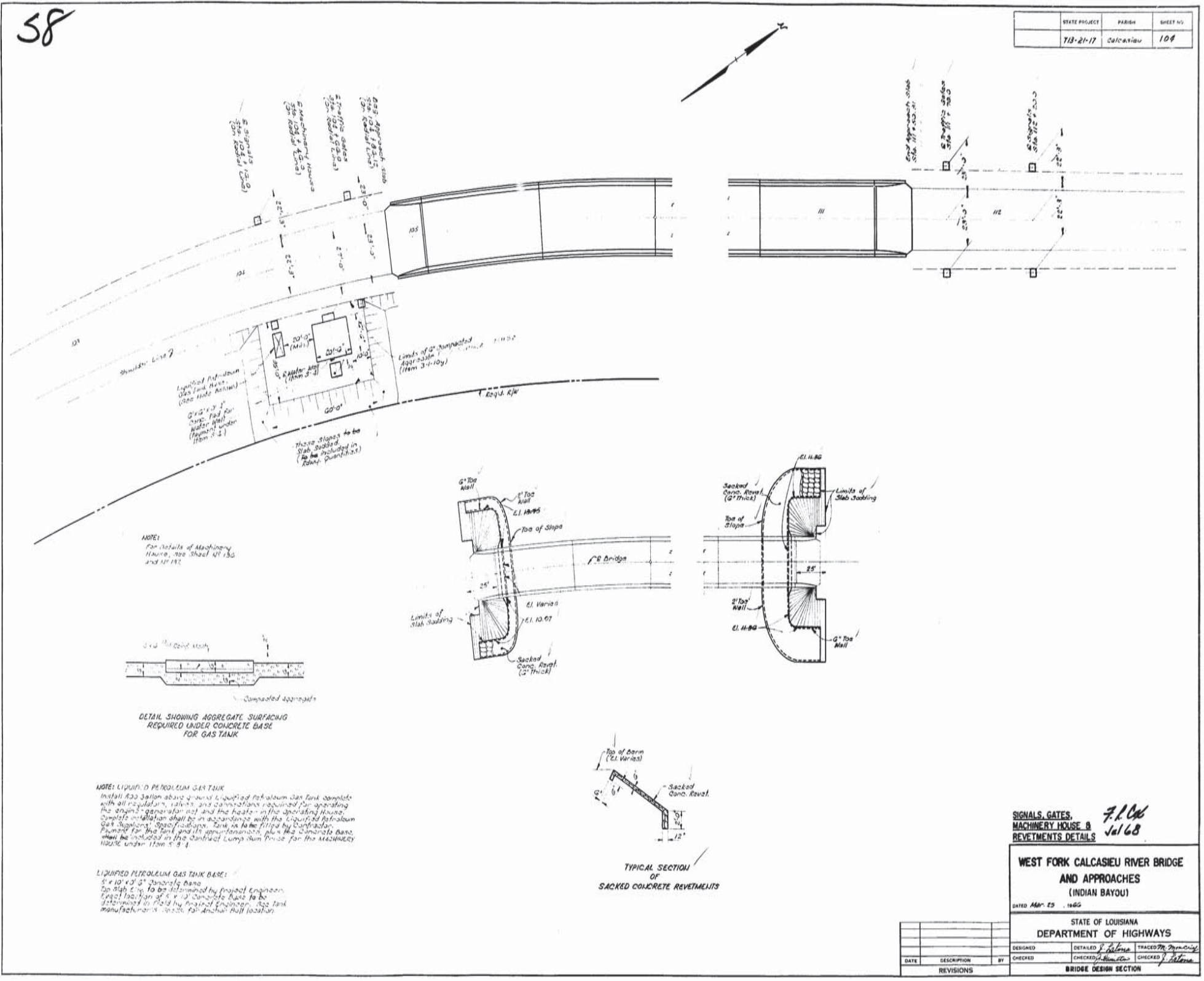
STATE OF LOUISIANA DEPARTMENT OF HIGHWAYS

DATE	DESCRIPTION	BY

DESIGNED	DRAWN	CHECKED	TRACED

AS BUILT PLANS





SIGNALS, GATES,
MACHINERY HOUSE &
REVETMENTS DETAILS

F.R. Cole
Jul 68

WEST FORK CALCASIEU RIVER BRIDGE
AND APPROACHES
(INDIAN BAYOU)

DATED APR. 25, 1965

STATE OF LOUISIANA
DEPARTMENT OF HIGHWAYS

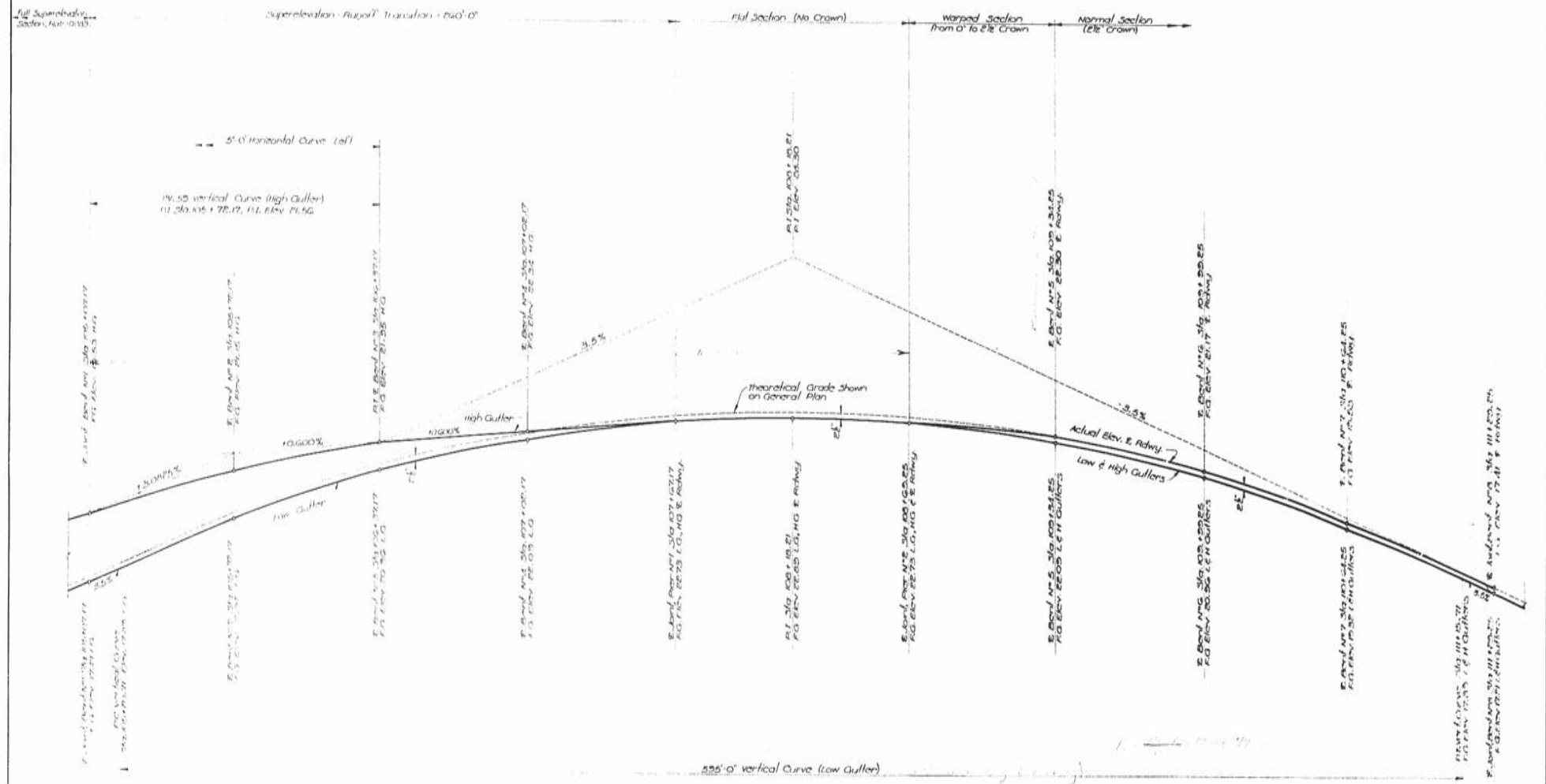
DESIGNED	DETAILED	TRACED
CHECKED	CHECKED	CHECKED

BRIDGE DESIGN SECTION



59

STATE PROJECT	DISTRICT	SHEET NO.
713-21-17	CALCASIEU	105



F. L. G.
Jul 68

GRADE PROFILE

WEST FORK CALCASIEU RIVER BRIDGE AND APPROACHES (INDIAN BAYOU)

DATED March 22, 1968

STATE OF LOUISIANA
DEPARTMENT OF HIGHWAYS

DESIGNED <i>R. Boffi</i>	DETAILED <i>R. Boffi</i>	TRACED <i>D. Andros</i>
CHECKED <i>R. Boffi</i>	CHECKED <i>R. Boffi</i>	CHECKED <i>R. Boffi</i>
IN CHARGE OF BRIDGE DESIGN SECTION		

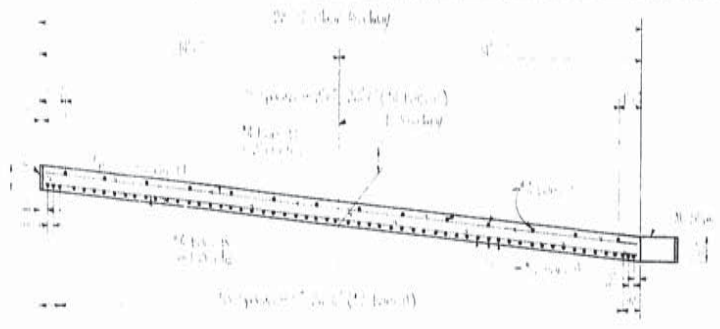
DATE	DESCRIPTION	BY

AS BUILT PLANS

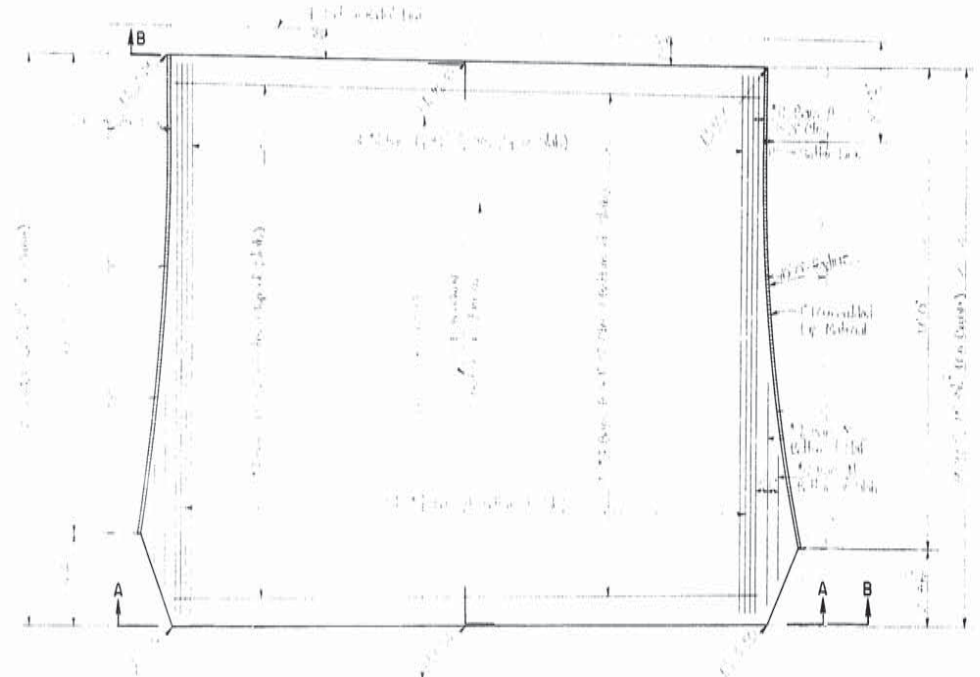


60

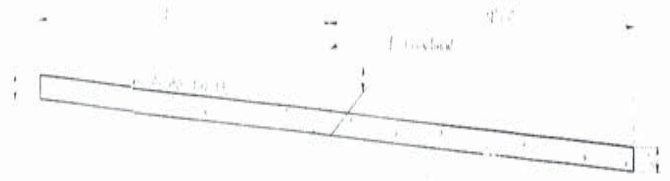
STATE PROJECT	PARISH	SHEET NO.
713-21-17	Orleans	106



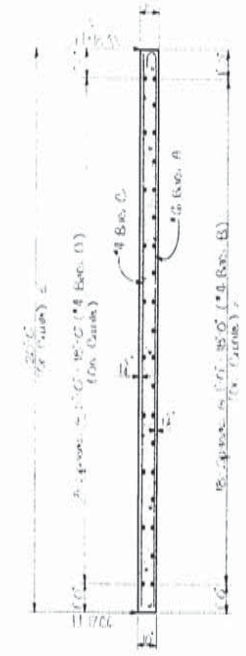
SECTION B-B



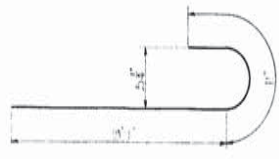
PLAN
(APPROACH SLAB - BEG BRIDGE)



SECTION A-A
(REINFORCEMENT NOT SHOWN)



SECTION ALONG & ROADWAY



N° 6 BARS A
(1/2" DIA PIN)

ESTIMATED QUANTITIES				
BAR SIZE	NO	UNIT LENGTH	TOTAL LENGTH	LOCATION
#4	22	22.0'	484.0'	Deck + Approach Slab
#4	2	7.0'	14.0'	Deck + Approach Slab
#4	2	5.0'	10.0'	Deck + Approach Slab
TOTAL #4 BARS = 506 = 1106.0' (174.16)				
#5	12	22.0'	264.0'	Deck + Approach Slab
#5	12	15.0'	180.0'	Deck + Approach Slab
#5	12	22.0'	264.0'	Deck + Approach Slab
TOTAL #5 BARS = 36 = 708.0' (104.14)				
TOTAL # OF BARS = 542 = 1414.0' (203.30)				
TEMPORARY REINFORCEMENT STEEL = 2470.0 LBS				
CONCRETE REINFORCEMENT = 6440.0 LBS				

NOTE:
Reinforcement bars shall be constructed in vertical and horizontal planes shown on General Notes.

GENERAL NOTES:
Construction Details shall be in accordance with the latest edition of the Louisiana Department of Highways Bridge Design Manual, 1968, as amended by various Supplements, 1971, and 1972.
Reinforcement bars shall be manufactured in accordance with ASTM A615 or ASTM A616 or Gal. Steel ASTM A616, conforming with ASTM A616. Dimensions relating to reinforcement shall be as to Bar Center.
Concrete shall be Class "A".
Promotional Expansion Material shall be installed in Area 101 for Concrete Approach Slab.

A. R. Cook
Jul 68

APPROACH SLAB - BEG. OF BRIDGE

WEST FORK CALCASIEU RIVER BRIDGE
AND APPROACHES
(INDIAN BAYOU)

DATED: March 11, 1968

STATE OF LOUISIANA
DEPARTMENT OF HIGHWAYS

DESIGNED	DETAILS	TRACED
CHECKED	CHECKED	CHECKED

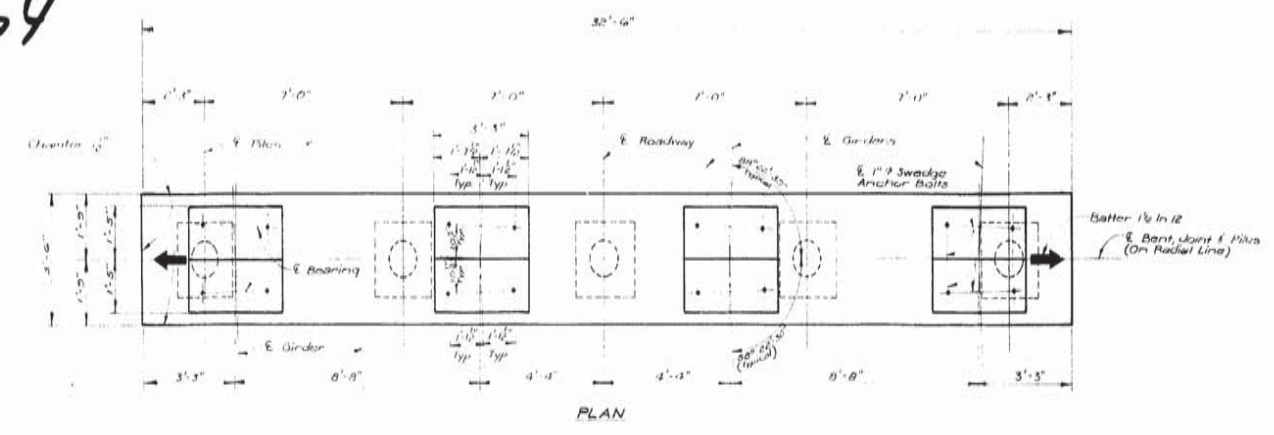
BRIDGE DESIGN SECTION

AS BUILT PLANS



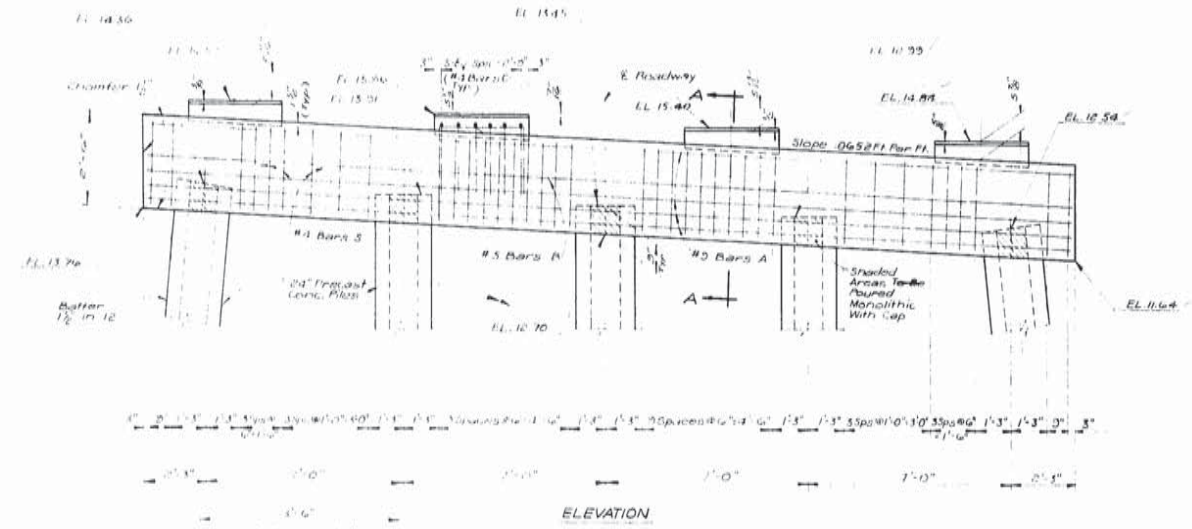
64

STATE PROJECT	PARISH	SHEET NO.
713-247	CALCASIEU	109

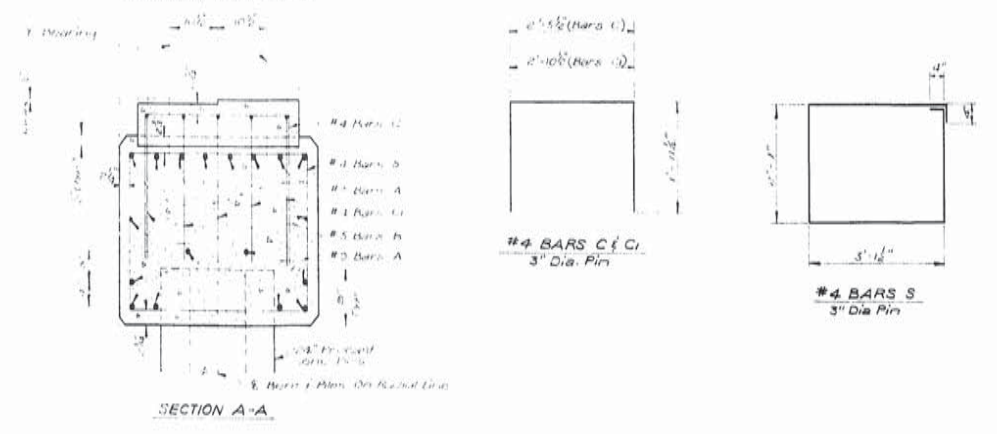


ESTIMATED QUANTITIES					
BAR	SIZE	Nº	UNIT LTH	TOTAL LTH	LOCATION
A	#3	16	52'-2"	514'-8"	Long In Cap
TOTAL #3 BARS = 514'-8"				1750 POUNDS	
B	#5	2	32'-2"	64'-4"	Long In Cap
TOTAL #5 BARS = 64'-4"				61 POUNDS	
C	#4	26	6'-4"	152'-0"	Stirrups In Abut
C1	#4	20	6'-2"	124'-0"	" " " "
S	#4	38	11'-1"	421'-2"	Stirrups In Cap
TOTAL #4 BARS = 708'-2"				473 POUNDS	
DEFORMED REINFORCING STEEL				= 2,280 POUNDS	
CLASS "A" CONCRETE				= 10.72 CU YDS	
MAX. PILE LOAD				= 74 TONS	

*Includes Shaded Area Shown in Elevation View.



NOTE:
For General Notes, See Sheet No. 114

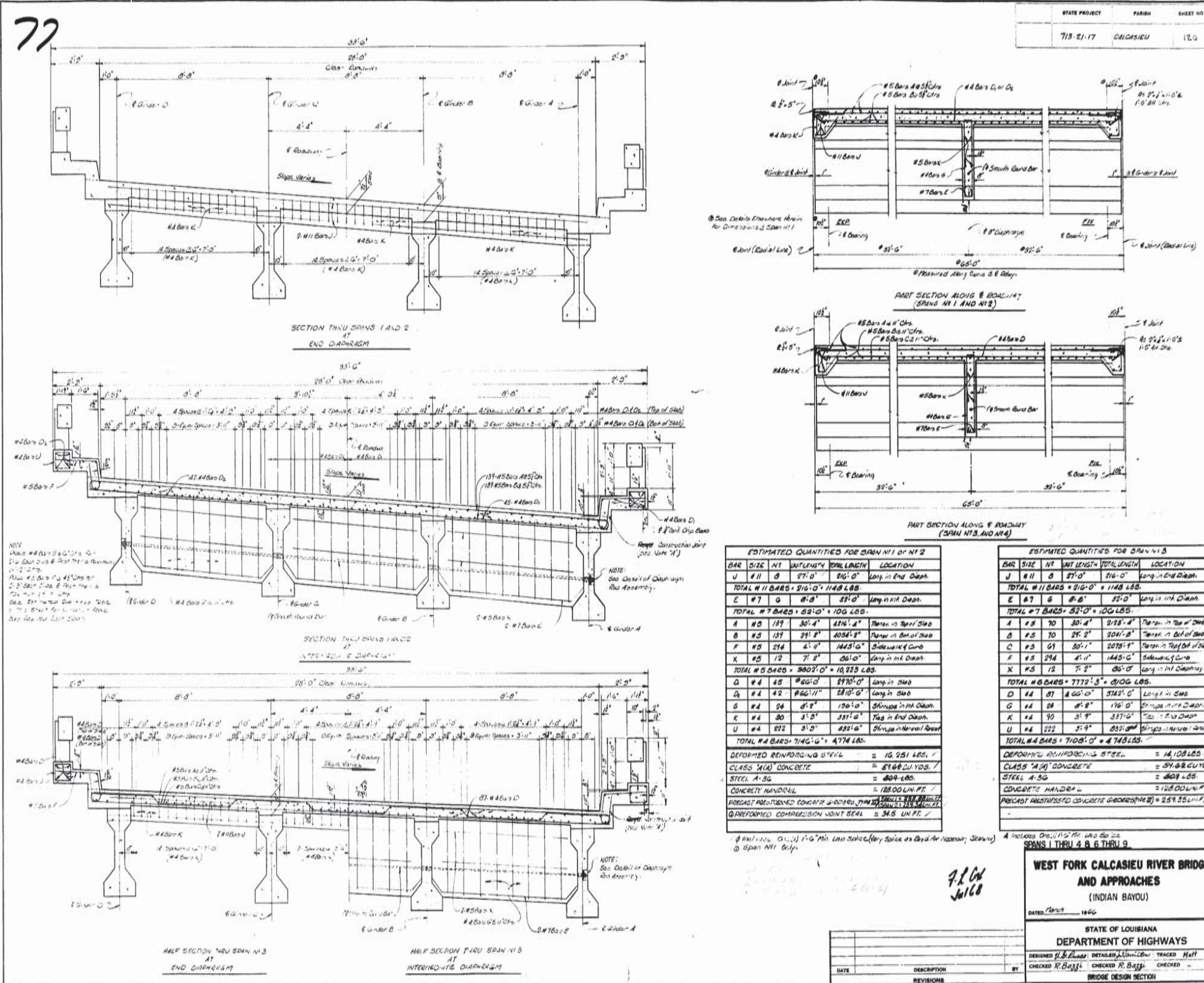


P.R. Cook
Jul 68

BENT NO. 2		
WEST FORK CALCASIEU RIVER BRIDGE AND APPROACHES (INDIAN BAYOU)		
DATED MARCH 9 1966		
STATE OF LOUISIANA DEPARTMENT OF HIGHWAYS		
DESIGNED	DETAILED	TRACED
CHECKED	CHECKED	CHECKED
BRIDGE DESIGN SECTION		

AS BUILT PLANS





STATE PROJECT	PARISH	SHEET NO.
713-21-17	ORLEANS	120

ESTIMATED QUANTITIES FOR SPAN #1 & #2

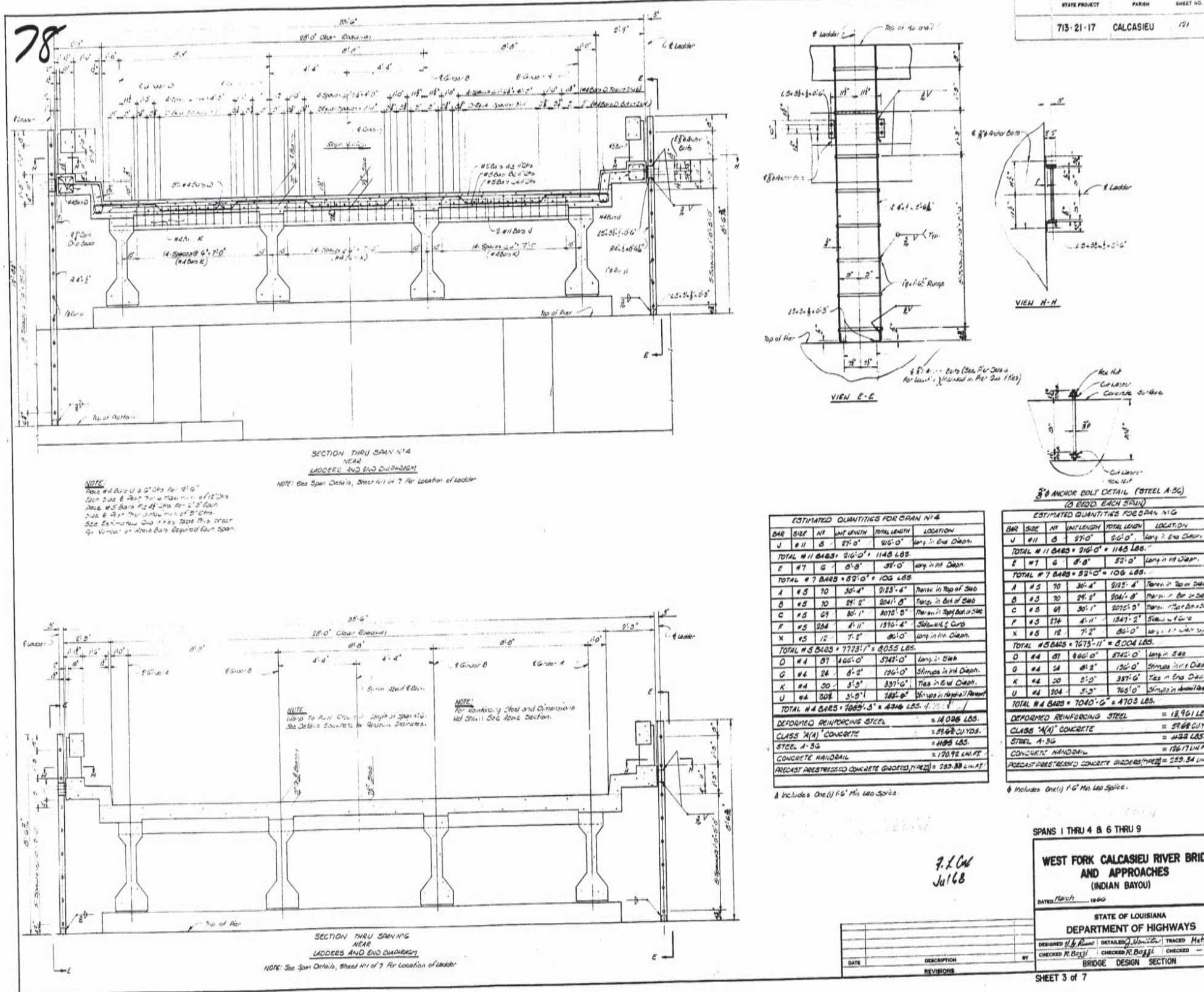
BAR	SIZE	NO	UNIT LENGTH	TOTAL LENGTH	LOCATION
U	#11	8	27'-0"	216'-0"	Long in End Depth
TOTAL #11 BARS = 216'-0" = 1148 LBS.					
E	#7	6	8'-0"	48'-0"	Long in End Depth
TOTAL #7 BARS = 48'-0" = 100 LBS.					
A	#5	129	30'-4"	3876'-2"	Top in Top of Deck
B	#5	131	29'-8"	3884'-8"	Top in Bot of Deck
F	#5	214	2'-0"	428'-0"	Side in Top of Deck
K	#5	12	7'-2"	86'-4"	Long in End Depth
TOTAL #5 BARS = 3802'-0" = 10,223 LBS.					
Q	#4	45	40'-0"	1800'-0"	Long in Deck
D	#4	42	40'-0"	1680'-0"	Long in Deck
G	#4	24	8'-8"	209'-6"	Straps in End Depth
K	#4	30	3'-0"	90'-0"	Top in End Depth
U	#4	22	3'-0"	66'-0"	Straps in End Depth
TOTAL #4 BARS = 2146'-0" = 474 LBS.					
DEFORMED REINFORCING STEEL = 10,251 LBS.					
CLASS "A" CONCRETE = 5168 CU. YDS.					
STEEL A-36 = 409 LBS.					
CONCRETE HANDRAIL = 12800 LBS.					
PRECAST REINFORCED CONCRETE JOINT SEALS = 345 LBS.					

ESTIMATED QUANTITIES FOR SPAN #3 & #4

BAR	SIZE	NO	UNIT LENGTH	TOTAL LENGTH	LOCATION
U	#11	8	27'-0"	216'-0"	Long in End Depth
TOTAL #11 BARS = 216'-0" = 1148 LBS.					
E	#7	6	8'-0"	48'-0"	Long in End Depth
TOTAL #7 BARS = 48'-0" = 100 LBS.					
A	#5	70	30'-4"	2128'-0"	Top in Top of Deck
B	#5	70	29'-8"	2072'-0"	Top in Bot of Deck
C	#5	61	30'-1"	1836'-1"	Top in Top of Deck
F	#5	214	2'-0"	428'-0"	Side in Top of Deck
X	#5	12	7'-2"	86'-4"	Long in End Depth
TOTAL #5 BARS = 7772'-3" = 2100 LBS.					
D	#4	87	40'-0"	3480'-0"	Long in Deck
G	#4	24	8'-8"	209'-6"	Straps in End Depth
K	#4	30	3'-0"	90'-0"	Top in End Depth
U	#4	22	3'-0"	66'-0"	Straps in End Depth
TOTAL #4 BARS = 3768'-0" = 474 LBS.					
DEFORMED REINFORCING STEEL = 14,108 LBS.					
CLASS "A" CONCRETE = 5168 CU. YDS.					
STEEL A-36 = 409 LBS.					
CONCRETE HANDRAIL = 12800 LBS.					
PRECAST REINFORCED CONCRETE JOINT SEALS = 345 LBS.					

WEST FORK CALCASIEU RIVER BRIDGE AND APPROACHES (INDIAN BAYOU)
 DATED: 1966
 STATE OF LOUISIANA
 DEPARTMENT OF HIGHWAYS
 DESIGNED BY: [Signature] CHECKED BY: R. B. [Signature]
 TRACED BY: [Signature] CHECKED BY: R. B. [Signature]



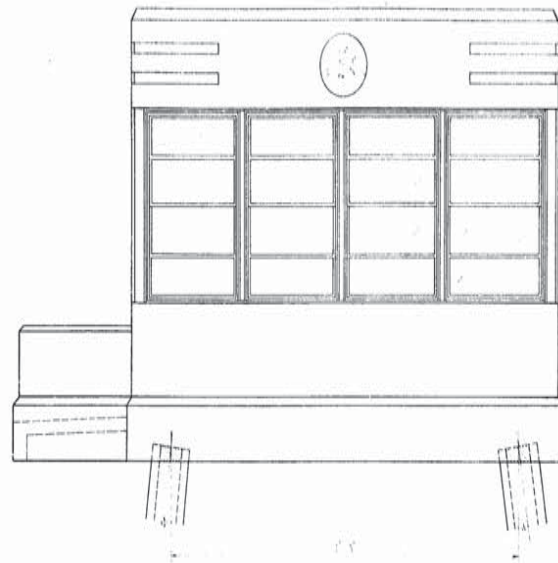


AS BUILT PLANS

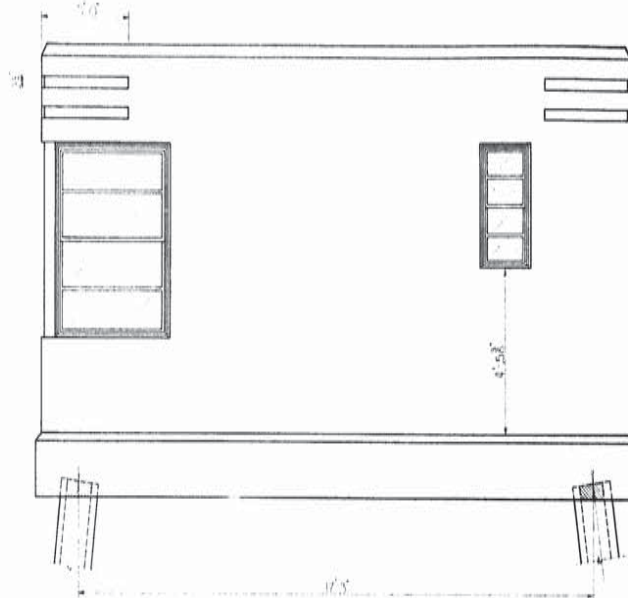


90

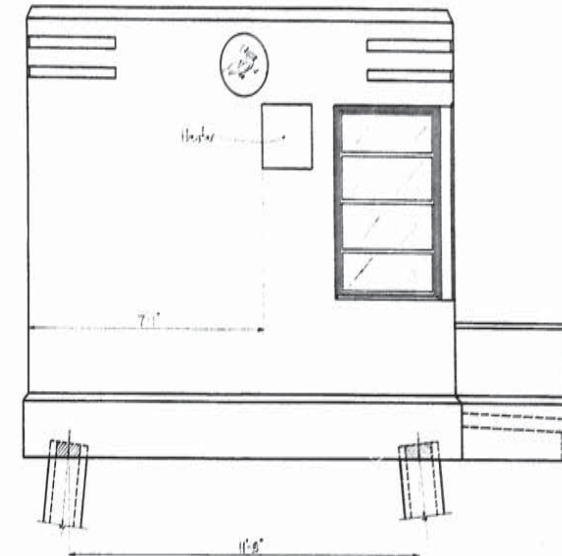
STATE PROJECT	PARISH	SHEET NO.
7-3-21-7	Ind. Bayou	131



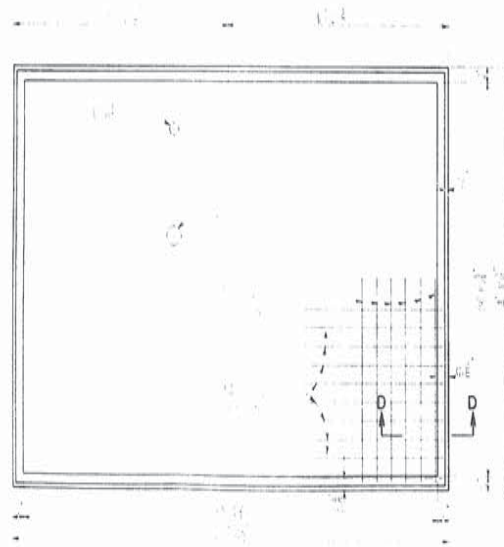
SIDE ELEVATION



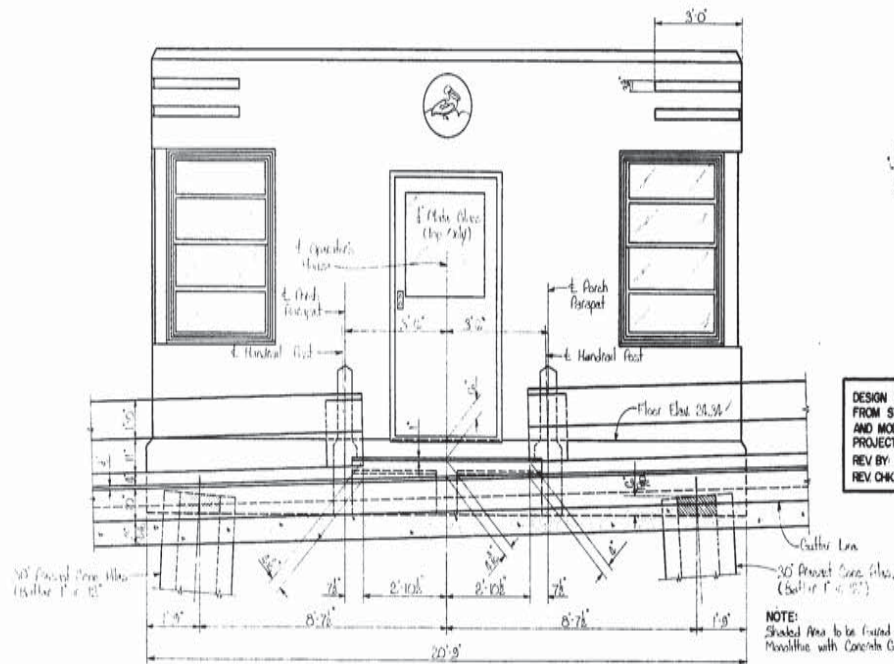
REAR ELEVATION



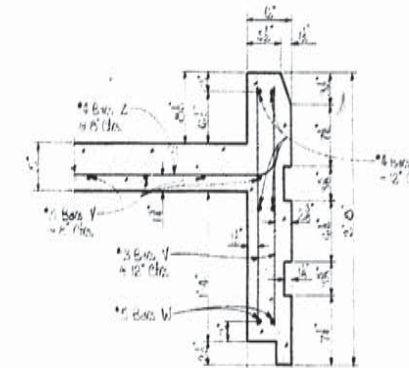
SIDE ELEVATION



ROOF PLAN



SECTION ALONG GUTTER LINE
SHOWING FRONT OF OPERATING HOUSE



SECTION D-D

DESIGN AND DETAILS TAKEN
FROM STD. PLAN 35-30-01
AND MODIFIED TO FIT THIS
PROJECT.
REV BY: R.B. DATE: 3-31-66
REV CHK BY: L.F. DATE: 3-3-66

NOTE:
Shaded Area to be Faced /
Smoothed with Concrete Gels.

F.R. Galt
JUL 68

OPERATING HOUSE

WEST FORK CALCASIEU RIVER BRIDGE
AND APPROACHES
(INDIAN BAYOU)

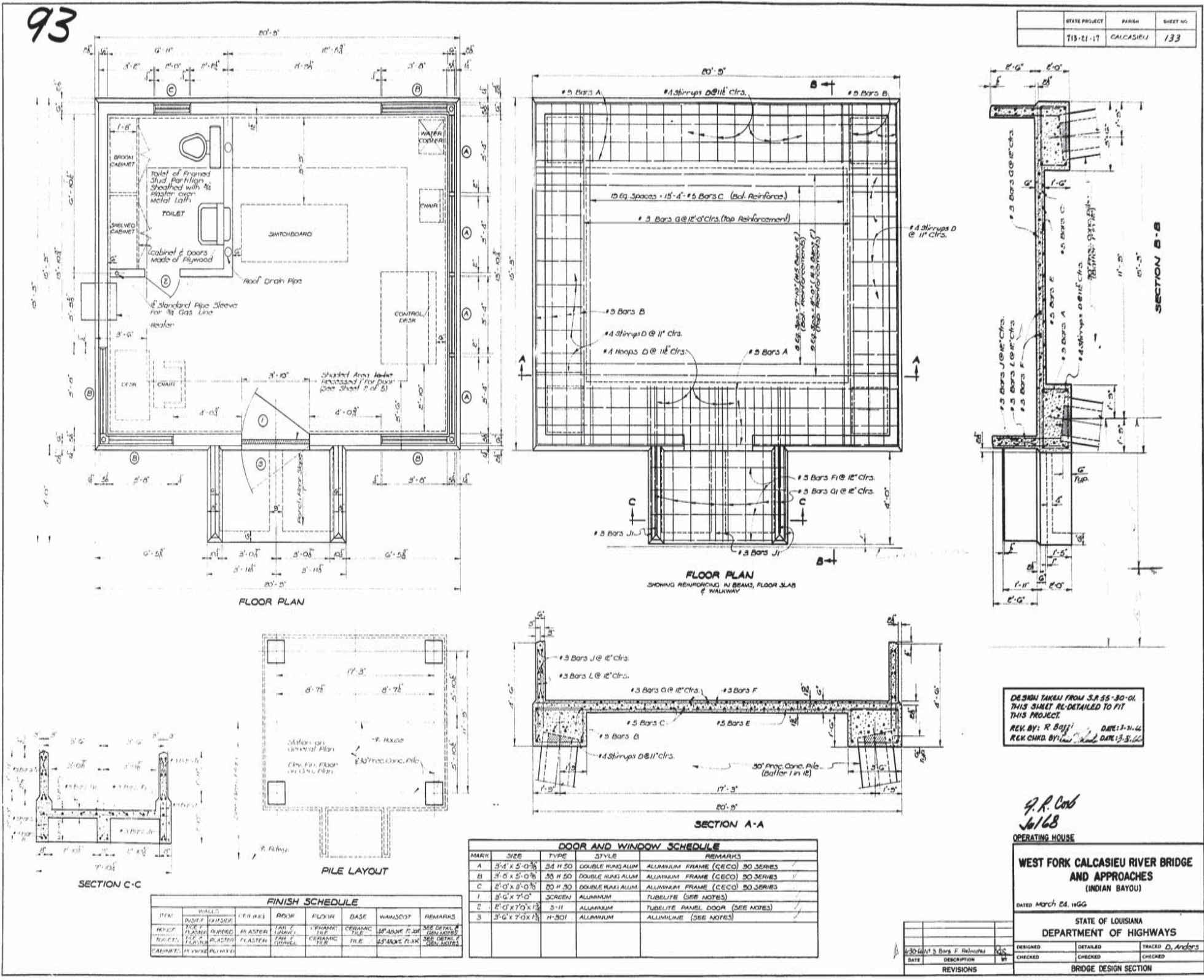
DATED March 22, 1965

STATE OF LOUISIANA		DESIGNED	DETAILED	TRACED
DEPARTMENT OF HIGHWAYS		CHECKED	CHECKED	CHECKED
DATE	DESCRIPTION	DATE	DATE	DATE
	REVISIONS			

SHEET 1 OF 5

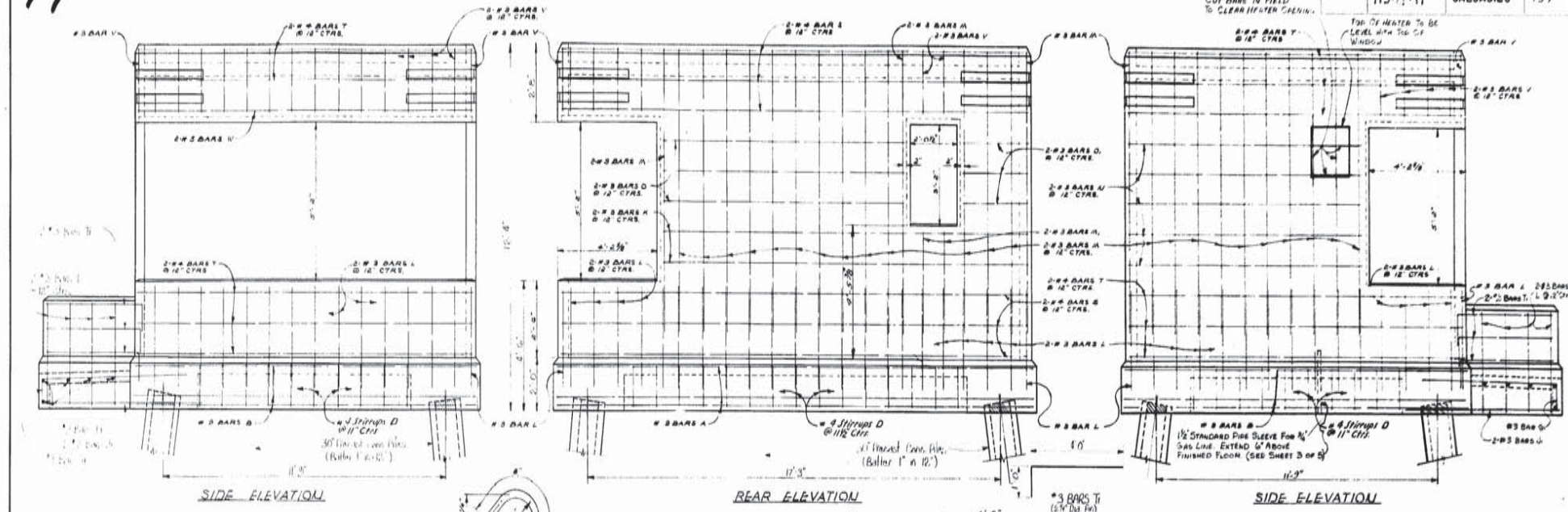
AS BUILT PLANS





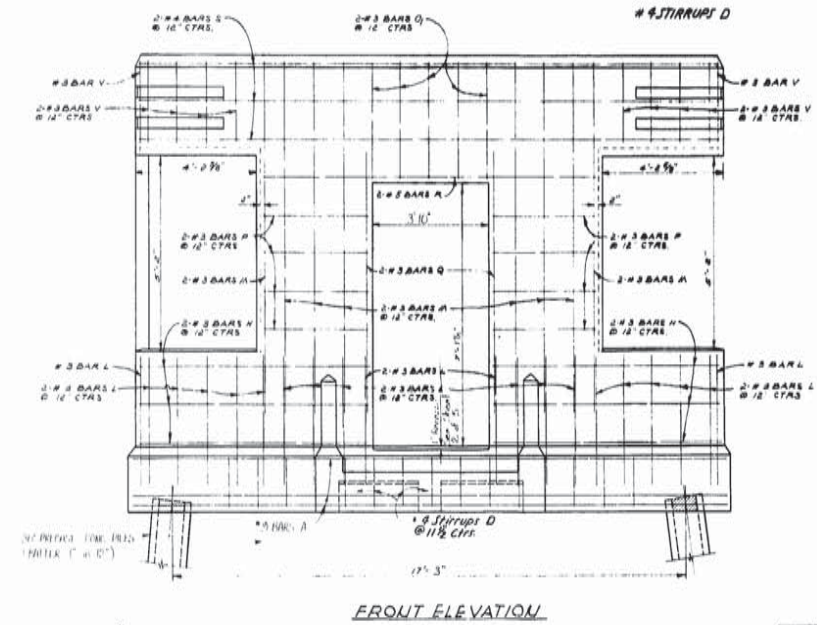
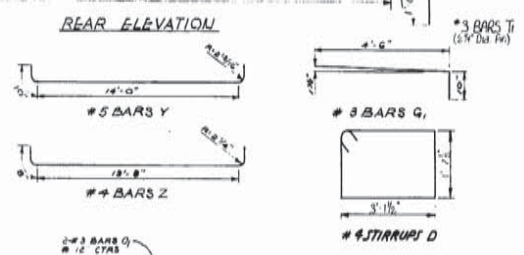
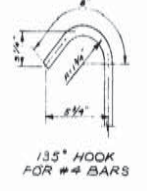
94

STATE PROJECT	PARTH	SHEET NO.
713-11-17	CALCASIEU	139



BILL OF REINFORCING STEEL

BAR SIZE	US	LENGTH	TOTAL LENGTH	LOCATION
A	#3	20'-5"	245'-0"	Front and Rear Elev - Top and Bot in Girders
B	#3	14'-11"	178'-0"	Side Elev - Top and Bot in Girders
TOTAL #3 BARS = 424'-0"				1842 LBS.
C	#5	18'-11"	238'-4"	Sec. A-A & B-B - Floor slab
R	#5	11'-5"	22'-10"	Wall above door - Front Elev.
V	#5	14'-7"	29'-2"	Wall above window - Side Elev.
Y	#5	15'-8"	470'-0"	Roof slab
Z	#5	21'-0"	252'-0"	IN BRIDGE GIRDER
TOTAL #5 BARS = 794'-0"				794 LBS.
D	#3	10'-0"	120'-0"	Stirrups in Girders
S	#4	20'-1"	241'-0"	Wall - Front and Rear Elev.
T	#4	14'-7"	200'-10"	Wall - Side Elev.
TOTAL #4 BARS = 1627'-9"				1087 LBS.
U	#3	10	203'-0"	Sec. A-A & B-B - Floor
W	#3	4-3"	236'-0"	Sec. A-A & B-B - Floor
Q	#3	2'-4"	24'-0"	Sidewalk
H	#3	12	96'-0"	Wall below window - Front Elev.
K	#3	4	24'-0"	Wall - Rear Elev.
L	#3	150	526'-0"	Bars in Wall - Front, Rear, Side Elev. and Porch Floor Parapet
M	#3	68	528'-0"	Vert in wall - Front, Rear, and Side Elev.
N	#3	4	14'-0"	Vert in wall - Rear Elev.
O	#3	2	10'-0"	Horizontal in wall - Side Elevation
P	#3	2	10'-0"	Horizontal in wall - Rear Elev.
D	#3	16	92'-0"	Horizontal in Wall - Rear Elev. and Vert in Wall above Door
J	#3	4	27'-0"	Vert in wall - Front Elev.
V	#3	70	145'-0"	Vert in wall above windows
X	#3	2	27'-0"	Vertical in Wall - Front Elev.
Y	#3	5	60'-0"	Horizontal in Porch Parapet
Z	#3	5	60'-0"	Horizontal in Porch Floor
TOTAL #3 BARS = 2385'-2"				897 LBS.



DESIGN AND DETAILS TAKEN FROM
 J.P. 55-10-01 AND MODIFIED
 TO FIT THIS PROJECT.
 REK BY: R.B. DATE: 3-1-68
 REK CHK BY: L.L. DATE: 3-1-68

F.R. Col
 Jul 68
 OPERATING HOUSE

WEST FORK CALCASIEU RIVER BRIDGE AND APPROACHES (INDIAN BAYOU)

DATE: March 25, 1968

STATE OF LOUISIANA
 DEPARTMENT OF HIGHWAYS

DESIGNED	DETAILS BY	TRACED
CHECKED	CHECKED BY	CHECKED

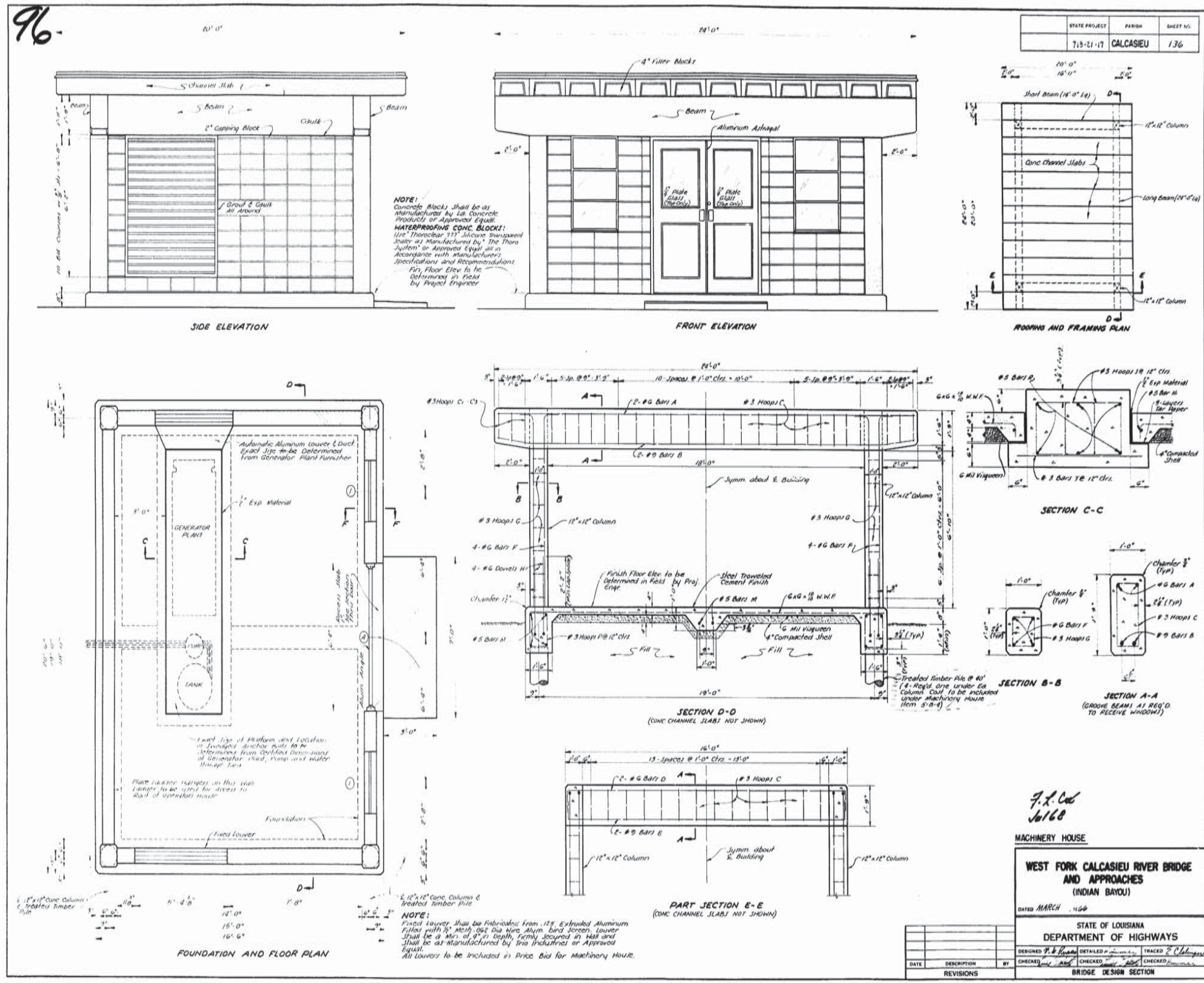
BRIDGE DESIGN SECTION

DATE	DESCRIPTION	BY

SHEET 4 OF 5

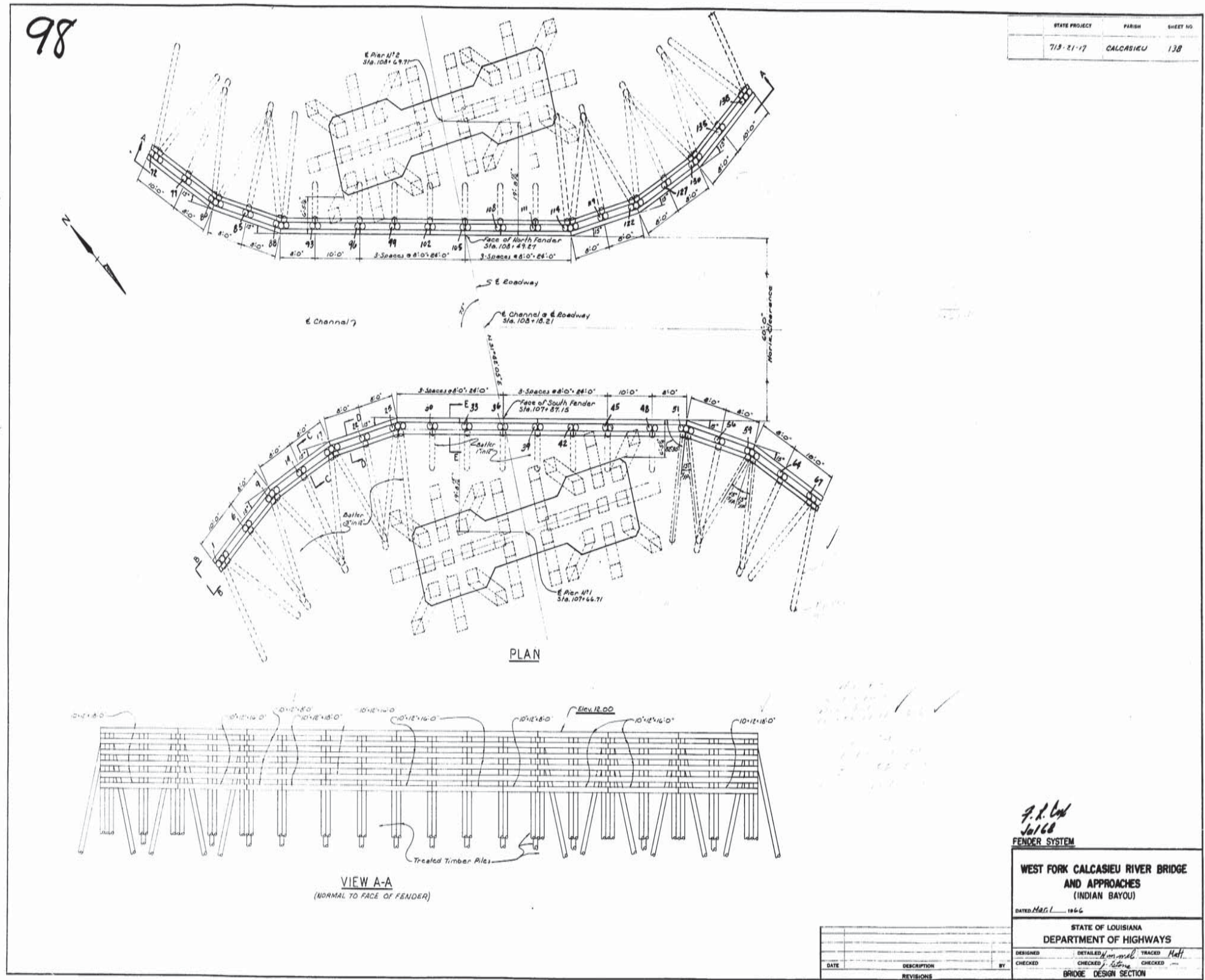
AS BUILT PLANS

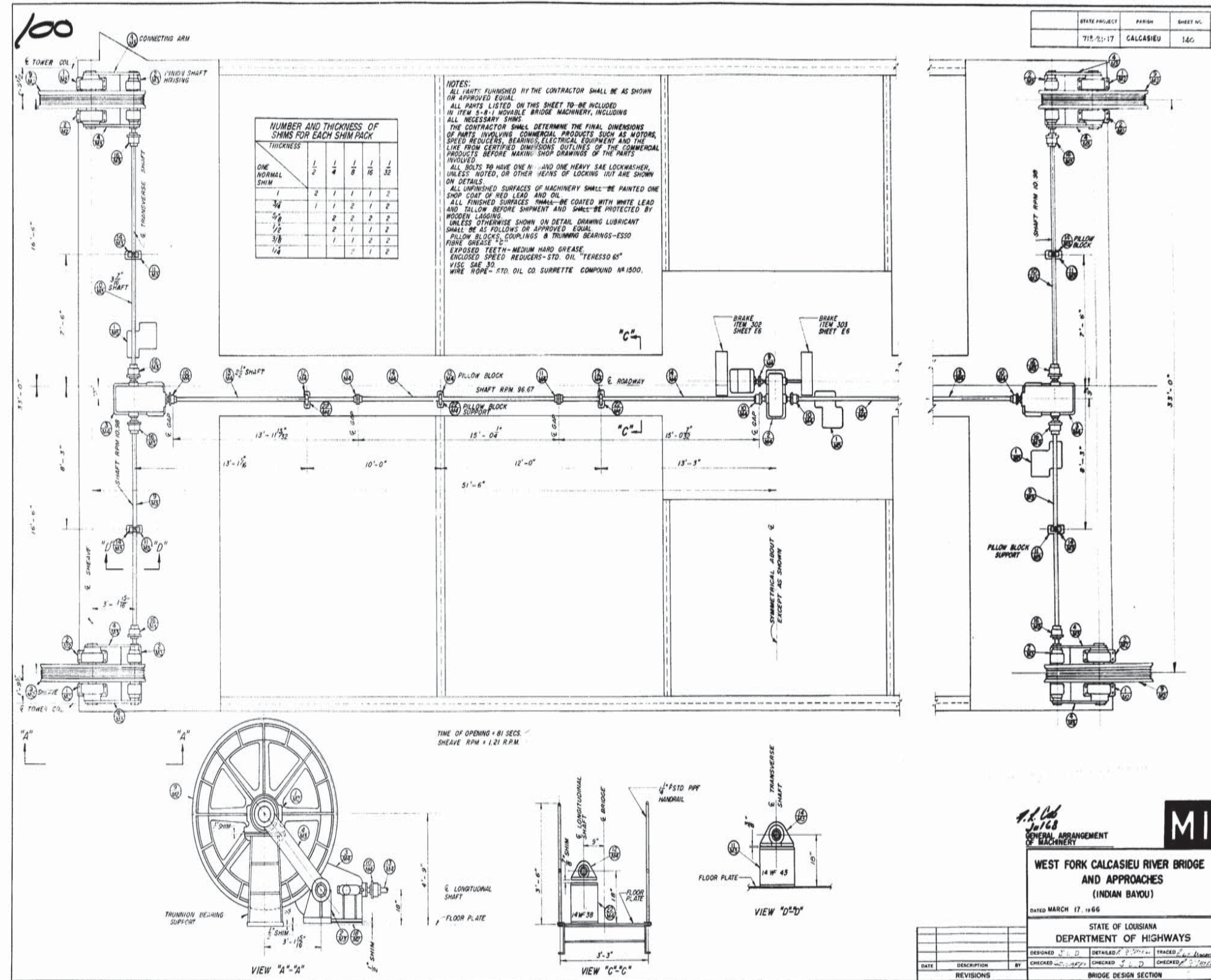




AS BUILT PLANS

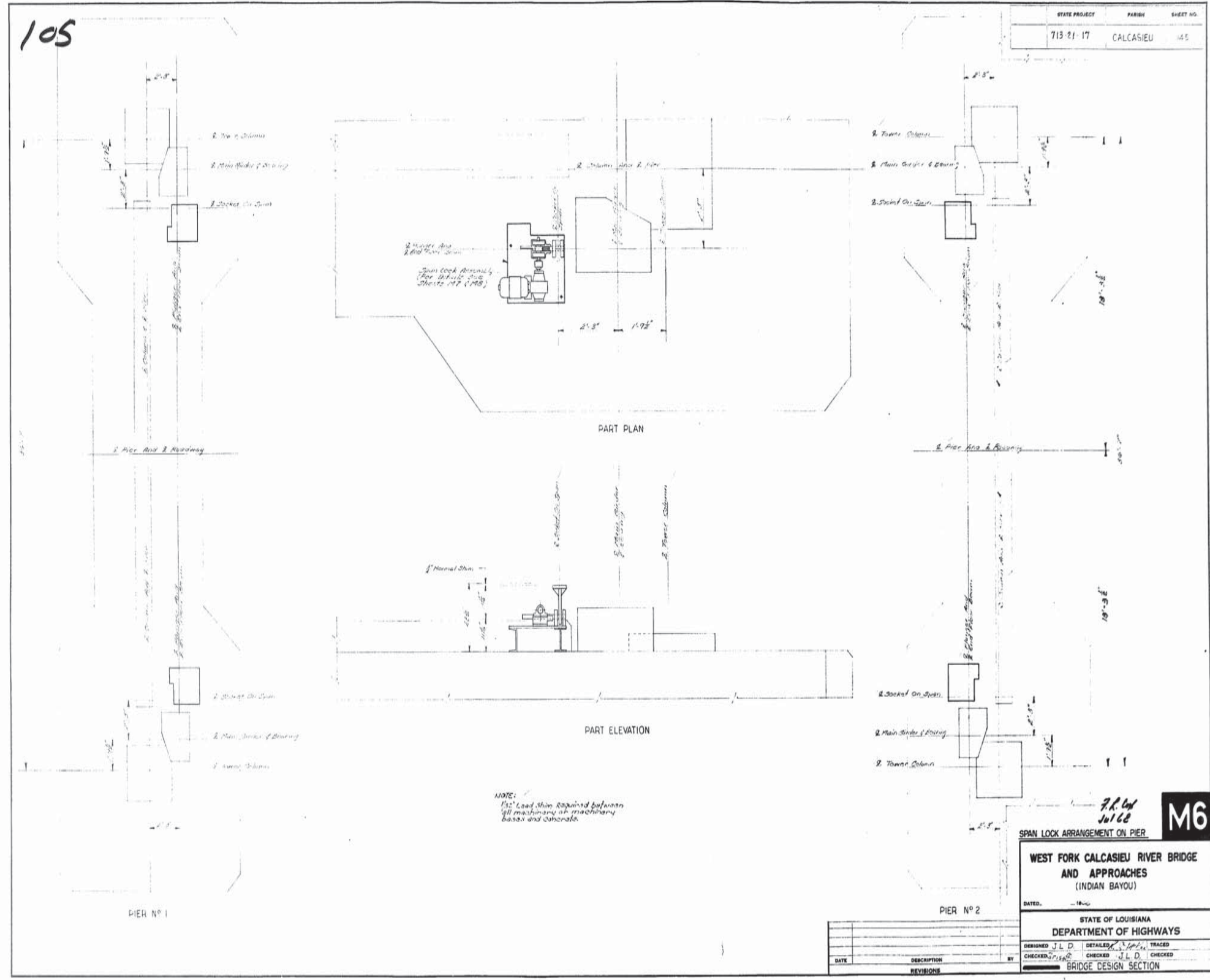






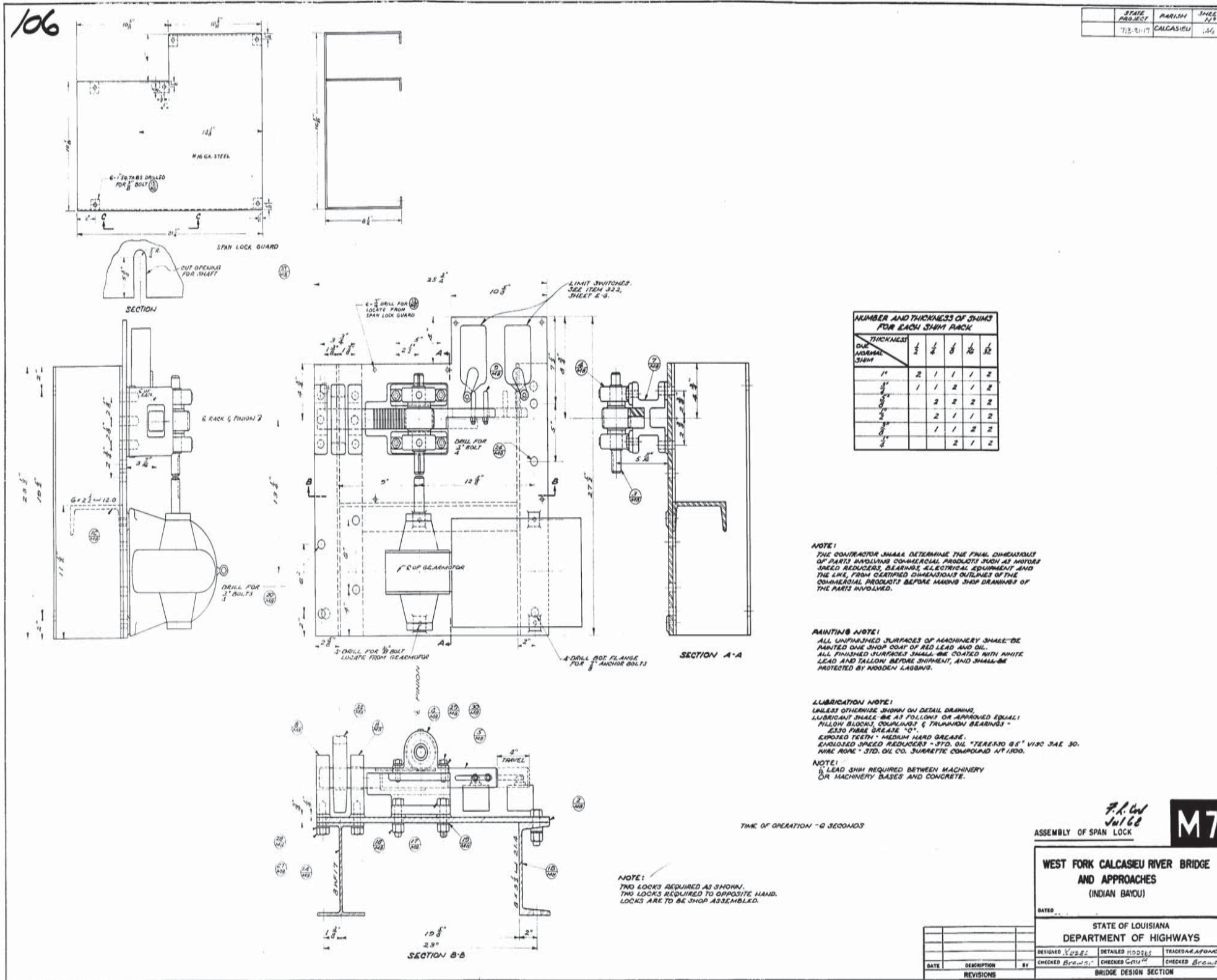
AS BUILT PLANS





AS BUILT PLANS





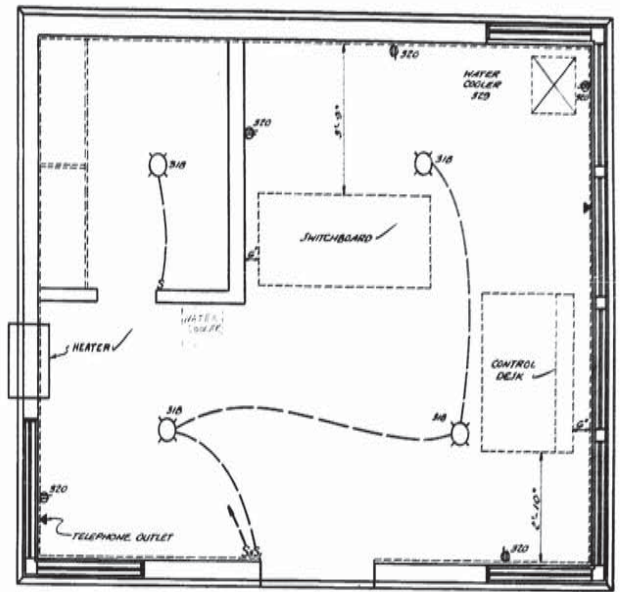
AS BUILT PLANS



129

STATE PROJECT	PARRH	SHEET NO
713-21-17	CALCASIEU	163

EQUIPMENT LIST							
ITEM	QUAN	NAME	SERVICE	LOCATION	MANUFACTURER	TYPE, MODEL, CAT. NO.	DESCRIPTION
304	1	MOTOR	WIND MOTOR	CENTER 1 st JUNCTION POINT	GENERAL ELECTRIC	TYPE MN, FRAME 332G	WIND MOTOR 20 H.P., 3 PHASE, 60 CYCLES, 220 VOLTS A.C., 100 RPM RPM APPROX 60 AMPS P.I. PRIMARY, 255 VOLTS, 325 AMPS P.I. SECONDARY, BALL BEARING, SHORT LIFE, 4400 RPM, 2 H.P., 10 AMP, 50°C RISE, TENS, WEATHERPROOF, STEEL MOUNTED TENSION BRACKET, WITH OVERLIE JUNCTION BOX.
305	1	BRAKE	SERVICE BRAKE	CENTER 1 st JUNCTION POINT	GENERAL ELECTRIC	CAT. NO. 1005100-16	TRAILER (DRUM) 220 VOLTS A.C., 3 PHASE, 60 CYCLES, 150 LB. FT. INTERMITTENT TORQUE, MOTOR MOUNTED, WATERPROOF NEMA TYPE 4 ENCL., WITH TIME DELAY ON DOWNSTROKE, WITH 2 CIRCUIT (1-N.C. & 1-N.O.) BRAKE LIMIT SWITCH, HAND RELEASE & HAND RELEASED LIMIT SWITCH (P.N.C. CONTACT), CORROSION RESISTANT FITTINGS, (L.F. T. HAND)
306	1	BRAKE	EMERGENCY BRAKE	CENTER 1 st JUNCTION POINT	JAMES H.J. ITEM 302		EXCEPT FLOOR MOUNTED, RIGHT HAND, WITH SHAFTEAL FOR 1 1/2" & SHAFTEAL
307	3	CLUTCH MOTOR & BRAKE LOCK	CLUTCHES	JUNCTION POINT	FURNISHED UNDER ITEM 304-1		TO BE 220 VOLT A.C., 3 PHASE, 60 CYCLE.
308	4	DISCONNECT	MAIN DISCONNECT	SERVICE POLE	CRUISE - HINDS	CAT. NO. 1005100-1684	3 POLE, 4 WIRE, 50, 600 VOLTS A.C., 150 AMP TRIP RATING, 225 AMP FRAME, NEMA TYPE 1E ENCL., 3 UNION HUBS TOP & BOTTOM, DRAN & BREATHER.
309	4	GATE	GATE	JEE GEN. PLAN	B & B ENGINEERING	TYPE ABC 16	2 N.P., 220 VOLTS, 60 CYCLE, 3 PHASE, MOTOR WITH THERMAL PROTECTION & AUTO REJECT.
310	4	BARRIER LIGHTS	GATE	GATE	CRUISE - HINDS	CAT. NO. 1005100-1684	12" RED L.T.C. LENS, 120 VOLTS, CAST ALUM. HOUSING, PAINTED TRAFFIC SIGNAL GREEN, BRACKET MOUNTING, FOR 100 WATT T.J. LAMP, WITH HOOD.
311	4	TRAFFIC SIGNALS	TRAFFIC WARNING	JEE GEN. PLAN	CRUISE - HINDS	CAT. NO. 1005100-1684	2 SECTION, 12" H.A.-0" 12" LENSES, CAST ALUMINUM, WITH HOOD, 4" PIPE SHAFTEAL, WITH HOT DIP GALVANIZED ANCHOR BOLTS AND HARDWARE, PAINTED TRAFFIC SIGNAL GREEN, JEE DETAIL, SHEET 68.
312	6	FENDER LIGHTS	NAVIGATION	FENDER	B & B ENGINEERING	CAT. NO. 1005100-1684	6" RED FRESNEL LENS, 100 HEAVY DUTY CAST ALUM. HOUSING WITH MOUNTING FLANGE, TAPPED FOR 1" CONDUIT, FOR 100 WATT R.J. LAMP.
313	2	NAVIGATION LIGHTS	NAVIGATION	JRN	B & B ENGINEERING	CAT. NO. 1005100-1684	100" RED & 360" GREEN FRESNEL LENSES, HINGED BRACKET TYPE WITH LOCK & CHAIN, CONSTRUCTED OF ALUMINUM WITH ALL SHAFTEALS STAINLESS STEEL.
314	2	FLOODLIGHT	CHANNEL ROY	JEE SHEET 69	CRUISE - HINDS	CAT. NO. 1005100-1684	HEAVY DUTY, INCANDESCENT, 300 WATT, 120 VOLTS OPERATING LENS, APPROVED FOR MARINE USE, WIDE BEAM, POLISHED ALUM. REFLECTOR.
315	2	LIMIT SWITCH	BARRIER	BENT	GENERAL ELECTRIC	CAT. NO. 1005100-1684	6 CIRCUIT, 10 AMP, 600 VOLTS A.C., DIRECT CONNECTION, WATERPROOF NEOPRENE GASKETED ENCLOSURE, WITH EXTRA DOOR FOR REVERSING SERVICE WITH CRUISE-HINDS DRAN AND BREATHER, ALL SHAFTEALS AND HARDWARE STAINLESS STEEL.
316	1	AIR COMPRESSOR	NAVIGATION HORN	PIER NO. 1	QUINCY COMPRESSOR	MODEL #408	1/2 HP, 220 VOLTS, SINGLE PHASE, 60 CYCLES A.C., 4.6 CU. FT. PULSON DISPLACEMENT, 100 PSI "CUT-OFF", 30 GAL. TANK, COMPLETE WITH 1/2" VALVE, STRAINER, DRAN COCK, PRESSURE GAUGE AND BELT GUARD, WITH TENS MOTOR, AND CAST IRON & BRASS JUNCTION.
317	1	AIR HORN	NAVIGATION HORN	PIER NO. 1	L.F.H.E.	CAT. NO. 1005100-1684	MARINE CONSTRUCTION, CAST ALUMINUM, MOUNTED BACK TO BACK, 1/2" PIPE TAP MIN. 6" DIAPHRAGM, MIN. OVERALL INDIVIDUAL LENGTH 21"
318	1	SOLENOID VALVE	NAVIGATION HORN	PIER NO. 1	B & B ENGINEERING	TYPE FLV1A32	220 VOLT COIL, CAST IRON ENCL., CAST IRON VALVE, BRASS MANUAL HANDLE OPERATOR, 1/2" JEE, 1/2" CONDUIT HUB, MAX. LINE PRESSURE 100 LBS., MAX. OPERATING PRESSURE 200 LBS., NORMALLY CLOSED VALVE, INTERNAL RIGID OPERATED.
319	4	PLUNGER LIMIT SW.	JRN SEATING	PIER	WESTERN RAILROAD SUPPLY	CAT. NO. 5907-214 B	QUICK BREAK, PLUNGER TYPE, WITH 4 N.O. COILS, CAST IRON WEATHERPROOF CASE, ALL PARTS SUBJECT TO CORROSION TO BE CADMIUM PLATED, EQUIPPED WITH CRUISE-HINDS BCD IS DRAN AND BREATHER.
320	4	LIGHT FIXTURE	OPERATING HOUSE	OPERATING HOUSE	PERFECTION	CAT. NO. 1005100-1684	OPAL GLASS, JATIN ALUMINUM FINISH, FOR 3-75 WATT LAMP, HINGED.
321	7	LIGHT FIXTURE	BACK DECK, GEN HOUSE	JUNCTION BOX/GEN HOUSE	CRUISE - HINDS	CAT. NO. 1005100-1684	VAPOR TIGHT FOR 100 WATT T.J. LAMP, 1/2" CONDUIT OPENING, PEAR SHAPED GLOBE, DOME REFLECTOR.
322	16	RECEPTACLE	CONVENIENCE OUTLET	JEE SHEET 61A	BRYANT	CAT. NO. 52821	DUPLEX RECEPTACLE, 15 AMP, 125 VOLTS, 3 WIRE GROUNDING TYPE, IVORY.
323	3	TUMBLER SWITCH	LIGHTING	OPER. & GEN HOUSE	BRYANT	CAT. NO. 6501-1	20 AMP, 125 VOLTS, SINGLE POLE, HEAVY DUTY, IVORY HANDLE.
324	1	CABLE REEL	NAVIGATION LIGHTS	PIER NO.	APREIDON	CAT. NO. C134	CONDENSER DUTY, EQUIPPED WITH GUIDE RAIL OUTLET, 55 AMP 600 VOLT RATING, WITH 75' OF 3 CONDUCTOR #12, N.E.C. TYPE 50, LEAD CURED CORD.
325	18	LIMIT SWITCH	CLUTCHES & LOCKS	BRIDGE STRUCTURE	ALLEN - BRADLEY	CAT. NO. A112-0X	4 CIRCUIT (1-N.C. & 2-N.O.) JUMP ACTION, JRN. RETURN, 9" TO OPERATE, 46" OVER TRAVEL, IDENTICAL CONTACT OPERATION IN EITHER DIRECTION, HEAVY DUTY, ROLLER TYPE, 2 1/2" RADIUS.
326	3	LIMIT SWITCH	JRN OPERATION	NEAR TOWER	ALLEN - BRADLEY	CAT. NO. A112-5X	10 AMP, 220 VOLTS A.C. 2 CIRCUIT (2-N.O.) JUMP ACTION, JRN. RETURN, 9" TO OPERATE, 46" OVER TRAVEL, IDENTICAL CONTACT OPERATION IN EITHER DIRECTION, HEAVY DUTY, ROLLER TYPE, 2 1/2" RADIUS.
327	2	LIMIT SWITCH	JRN OPERATION	NEAR TOWER	ALLEN - BRADLEY	CAT. NO. A102-5X	2 CIRCUIT (2-N.C.) JUMP ACTION, JRN. RETURN, 9" TO OPERATE, 46" OVER TRAVEL, IDENTICAL CONTACT OPERATION IN EITHER DIRECTION, HEAVY DUTY, ROLLER TYPE, 2 1/2" RADIUS, 10 AMP, 220 VOLTS A.C.
328	3	LIMIT SWITCH	JRN OPERATION	NEAR TOWER	ALLEN - BRADLEY	CAT. NO. A102-5X	2 CIRCUIT (1-N.C. & 1-N.O.) JUMP ACTION, JRN. RETURN, 9" TO OPERATE, 46" OVER TRAVEL, IDENTICAL CONTACT OPERATION IN EITHER DIRECTION, HEAVY DUTY, ROLLER TYPE, 2 1/2" RADIUS, 10 AMP, 220 VOLTS A.C.
329		TERMINAL BLOCK	CONDUCTOR TERMINAL	JUNCTION BOXES	BUCHANAN	CAT. NO. B112 J	12 CIRCUIT, 25 AMP, 600 VOLTS, JOLDERLETT BOX LUG, HIGH COMPRESSION TYPE, WHITE MARKING STRIP.
330		TERMINAL BLOCK	CONDUCTOR TERMINAL	JUNCTION BOXES	SQUARE D	TYPE U.S.	3 CIRCUIT, 100 AMP, 600 VOLTS, JOLDERLETT BOX LUG, HIGH COMPRESSION TYPE, WHITE MARKING STRIP.
331	1	WATER COOLER	OPERATING HOUSE	OPERATING HOUSE	HEATING HOUSE	MODEL WC-99	COMPARTMENT TYPE, WITH "3-TEMP" FOOD, ICE, WATER, 10 VOLT, 1 CU. FT. STORAGE, 3 1/2 LB. ICE CAPACITY.
332	1	GENERATOR SET	EMERGENCY POWER	GENERATOR HOUSE	JEE SHEET 29 FOR COMPLETE SPECIFICATIONS		
333	1	TRANSFER SWITCH	EMERGENCY POWER	GENERATOR HOUSE	ALLEN - BRADLEY	BULLDOG 170L TYPE A OF MP 120 EARS-063	3 PHASE, 4 WIRE, 30, 220 VOLTS, 60 CYCLES A.C. 50 H.P., 135 AMP, LESS ENCLOSURE, PLACE IN STANDARD L.D.H. JUNCTION BOX, JEE SHEET 67.
334	2	GEARMOTOR & ROPE	BARRELS	BENT	GENERAL ELECTRIC	TYPE PD, FRAME 224RC	2 N.P., 220 VOLTS, 3 PHASE, 60 CYCLES A.C. 135 RPM, 58°C RISE, 30 MIN. CRANE AND HOIST DUTY, 8 1/2 P.L.A. TENS. WEATHERPROOF, 1:1 MOUNTING, OVERLIE CAST IRON JUNCTION BOX WITH NEOPRENE GASKET - ROTATED 90° FROM NORMAL, WITH 1/2" DRIVE SHAFTEAL AND 1/2" SHAFTEAL OPERATOR FOR LIMIT SWITCH WITH DUTY TYPE BRAKE WITH EXTERNAL MANUAL RELEASE, 10 LB. FT. TORQUE ON BRAKE. ALL A.S. PER MASTER DRAWING MP 10-22-2321.
335	2	3 WAY SWITCH	LIGHTING	OPER. & GEN HOUSE	BRYANT	CAT. NO. 6503-1	20 AMP, 125 VOLTS, 3-WAY, HEAVY DUTY, IVORY HANDLE.



OPERATING HOUSE LAYOUT

GENERAL NOTES:
 1. THE CONTRACTOR SHALL FURNISH EQUIPMENT AS SHOWN ON THE ABOVE LIST OR THE EQUIPMENT SHALL BE OBTAINED FROM THE BRIDGE DESIGN ENGINEER BEFORE THE EQUIPMENT IS ORDERED.
 2. ALL GASKETS FOR ALL ELECTRICAL EQUIPMENT SHALL BE NEOPRENE.

J.R. Goff
 Jul 68

BRIDGE EQUIPMENT LIST B
 OPERATING HOUSE LAYOUT

E6

WEST FORK - CALCASIEU RIVER BRIDGE
 AND APPROACHES
 (INDIAN BAYOU)

DATED: Feb. 21, 1968

STATE OF LOUISIANA
 DEPARTMENT OF HIGHWAYS

DESIGNED	BY	DATE	DESCRIPTION
BY	BY	BY	BY
CHECKED	CHECKED	CHECKED	CHECKED
BY	BY	BY	BY

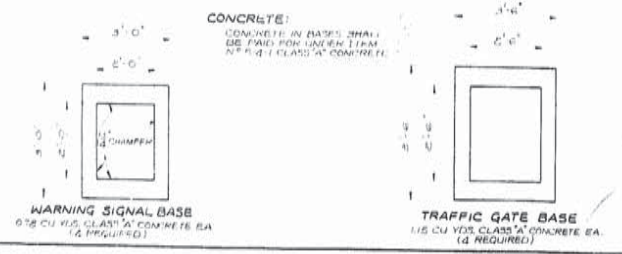
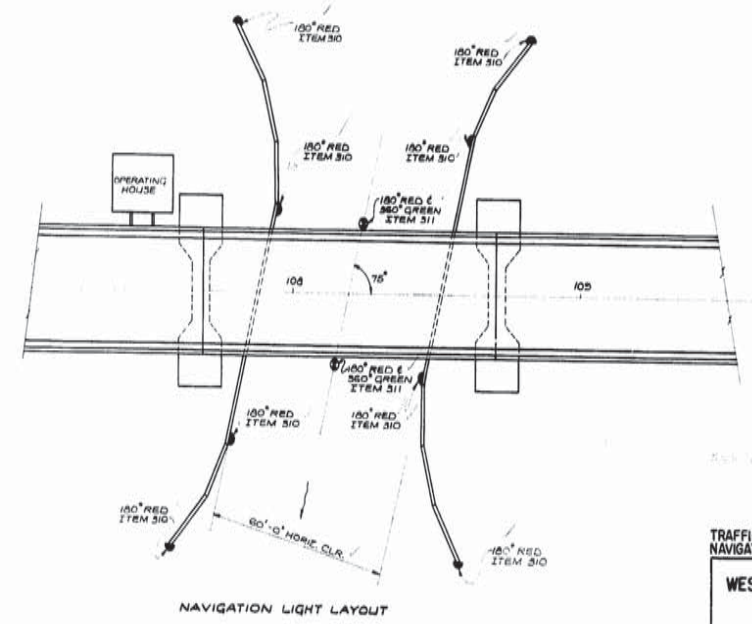
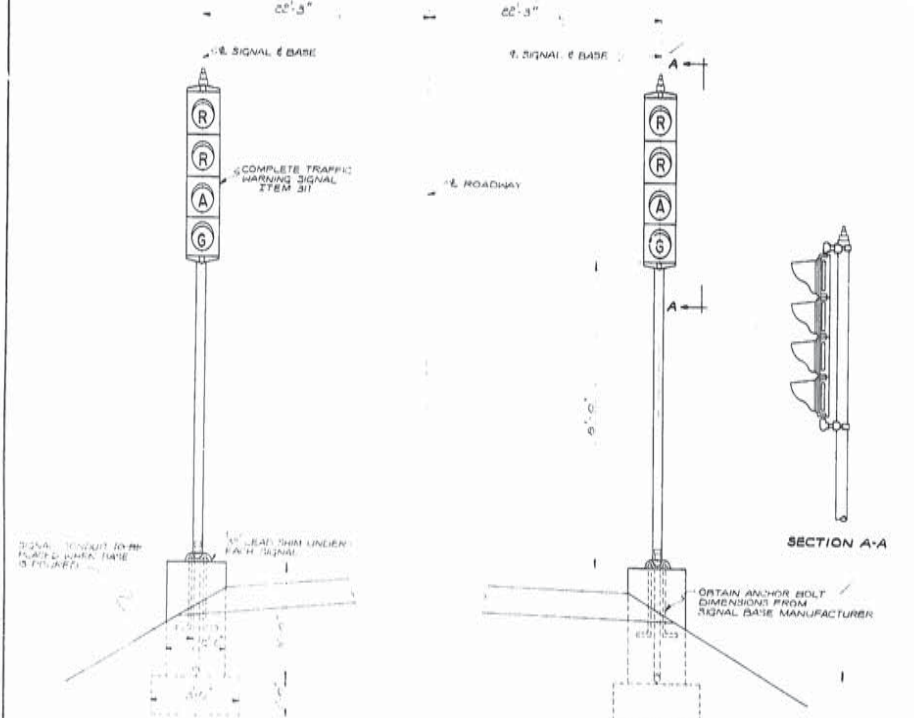
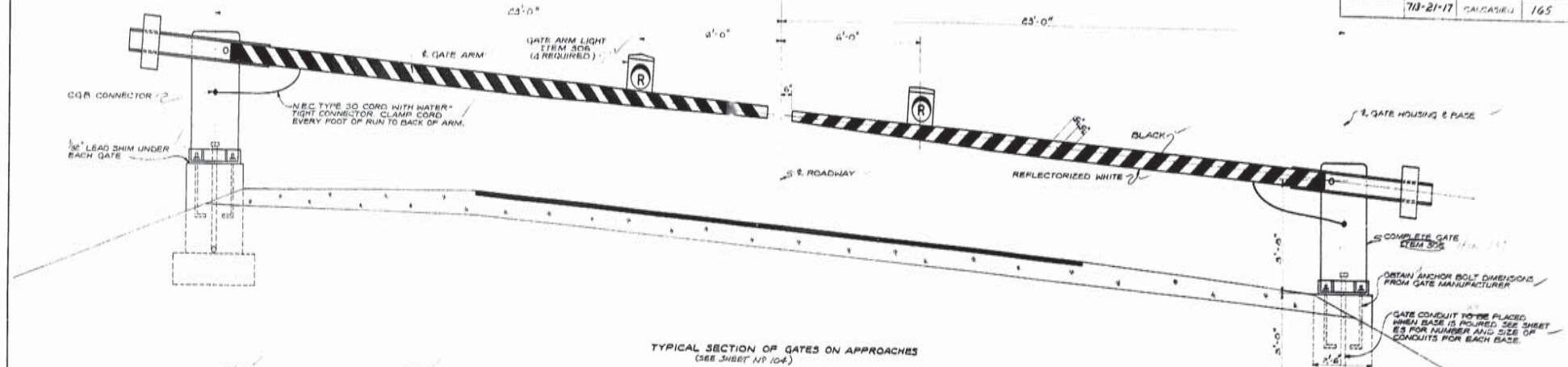
BRIDGE DESIGN SECTION

EQUIPMENT LIST NOTES:
 1. WATER COOLER TO BE FINISHED WITH SEA-MIL GREEN ENAMEL.
 2. SWITCH AND OUTLET PLATES IN OPERATING HOUSE SHALL BE SIEMENS 50 TYPE "D" ONE WIRE PLASTIC, CAT. NO. 10-1, 10-2 AND 10-3.
 3. GATES TO BE OPERATED ON A JUMP-RELEASED SECTION. SEE SHEET 68 AND PROVIDE PROPER TRAVEL SO THAT GATE ARMS WILL BE VERTICAL WHEN IN THE RAISED POSITION.



131

STATE PROJECT	PARAN	SHEET NO.
711-21-17	CALCASIEU	165



ANCHOR BOLT NOTE:
ALL ANCHOR BOLTS TO BE HOT DIPPED GALVANIZED.

F.R. Col
Jul 68

E8

TRAFFIC GATES, WARNING SIGNALS, NAVIGATION LIGHTS.

WEST FORK CALCASIEU RIVER BRIDGE AND APPROACHES (INDIAN BAYOU)

DATED MARCH 3, 1966

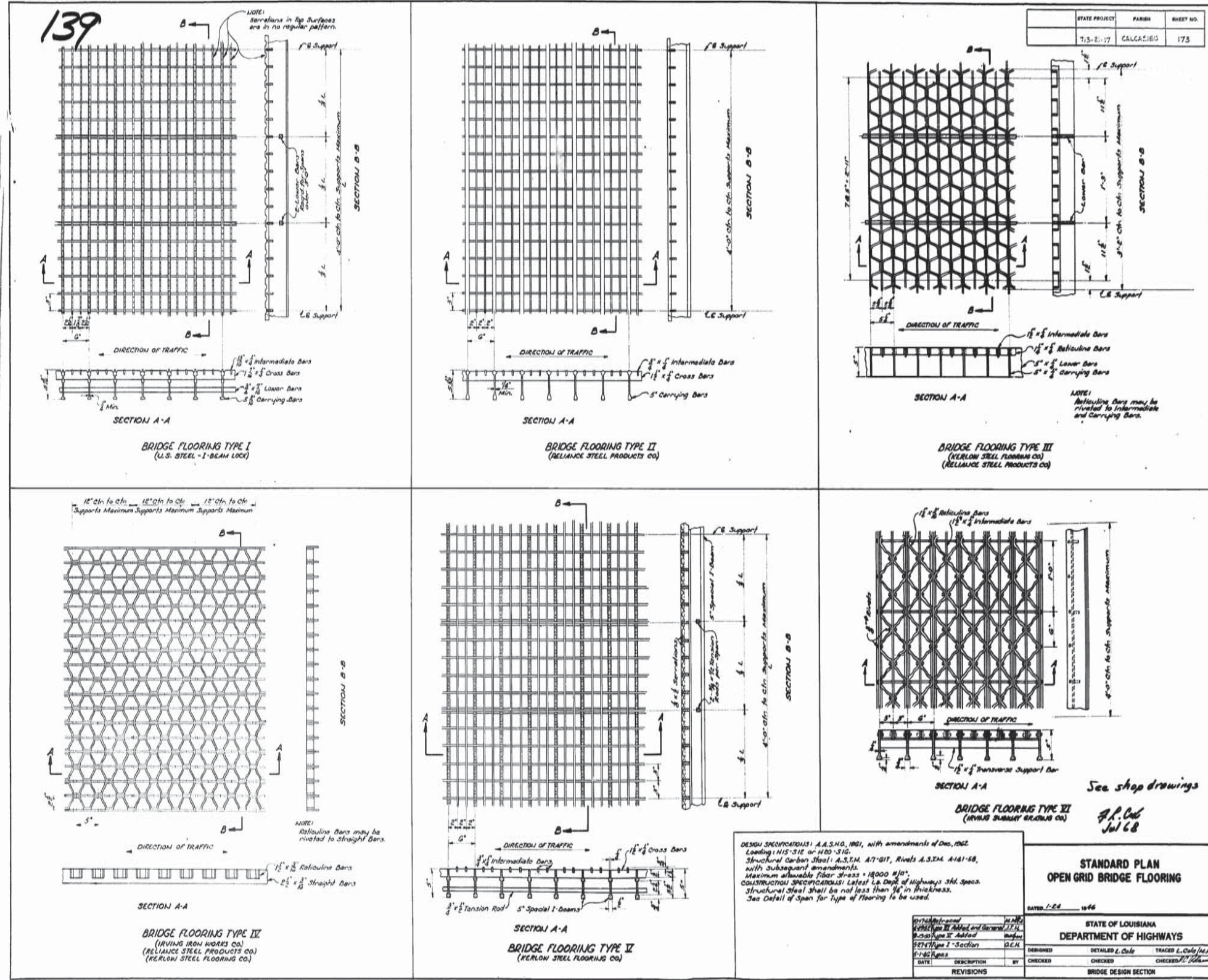
STATE OF LOUISIANA
DEPARTMENT OF HIGHWAYS

DESIGNED	BY	DATE	DESCRIPTION	BY	DATE
Checked	Checked	Checked	Checked	Checked	Checked

IN CHARGE OF: BRIDGE DESIGN SECTION

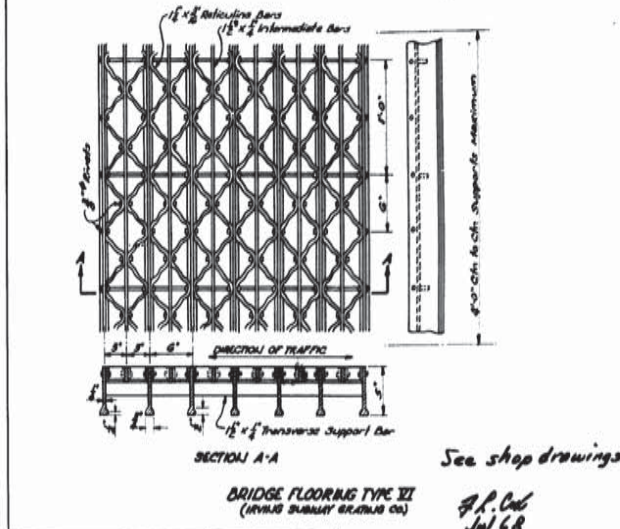
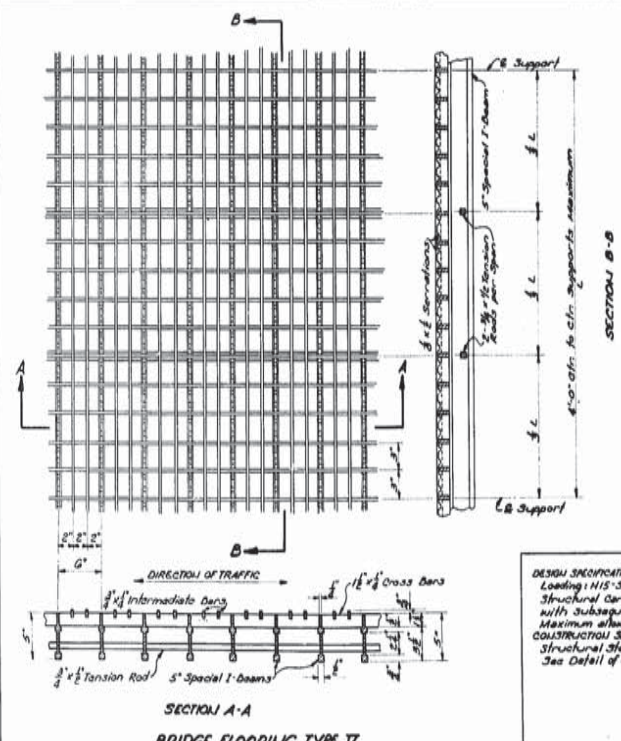
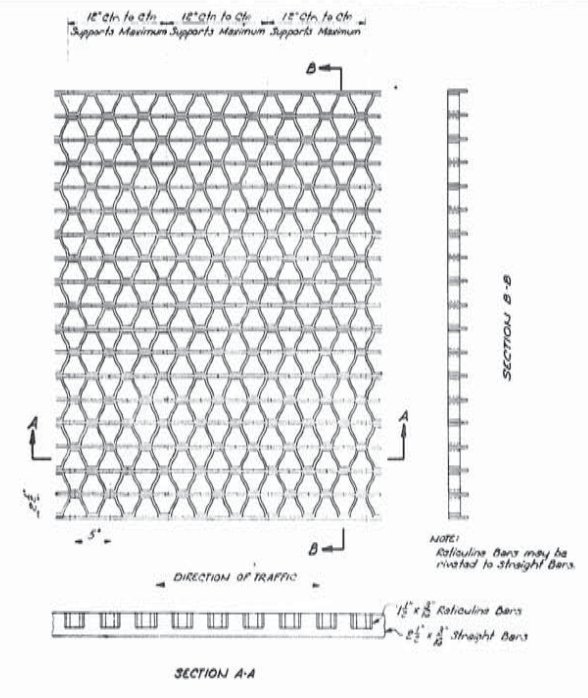
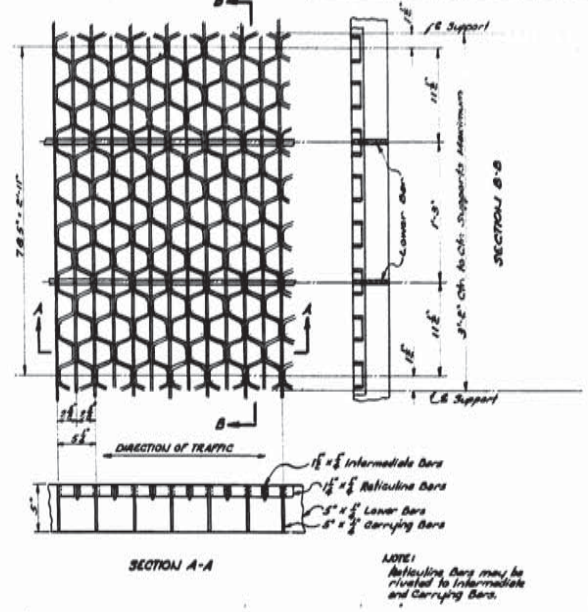
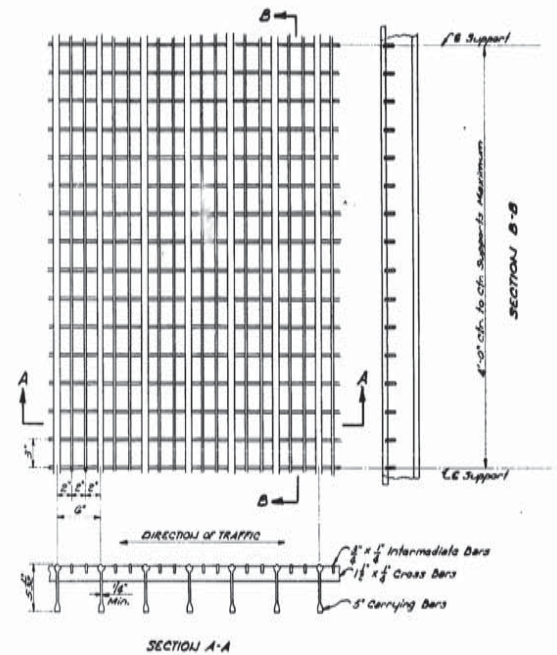
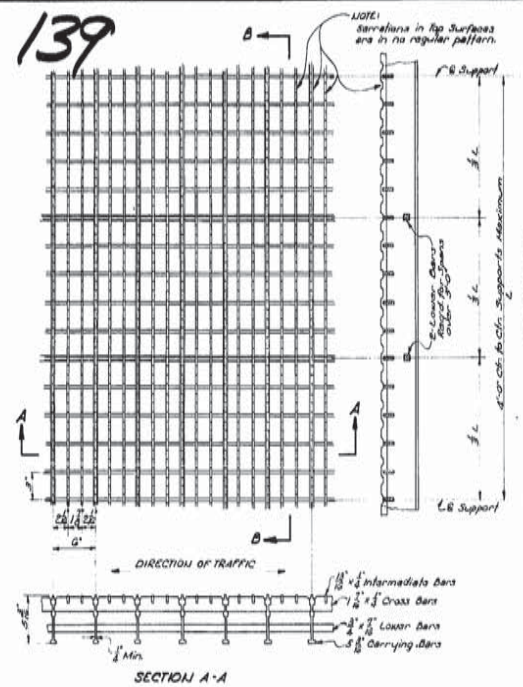
AS BUILT PLANS





STATE PROJECT	FARMS	SHEET NO.
7,5-2-17	CALCASIEUS	173

139



DESIGN SPECIFICATIONS: A.S.T.M. 1091, with amendments of Dec. 1962.
Loading: HS-20 or HB-30.
Structural Carbon Steel: A.S.T.M. A7-61T, Rivets A.S.T.M. A141-68, with subsequent amendments.
Maximum allowable fiber stress = 18000 psi.
CONSTRUCTION SPECIFICATIONS: Latest La. Dept. of Highways Std. Specs.
Structural steel shall be not less than 3/8" in thickness.
See Detail of Open for Type of Flooring to be used.

STANDARD PLAN
OPEN GRID BRIDGE FLOORING

DATE: 1-22-66

STATE OF LOUISIANA	
DEPARTMENT OF HIGHWAYS	
DESIGNED	TRACER L. Cole/JCM
CHECKED	CHECKED
BRIDGE DESIGN SECTION	



S-M-26